

PLAT AND RECORD

Of a Survey on Section 18 T 3 R 1A E. of the 4 P. M. in Johnstown Township

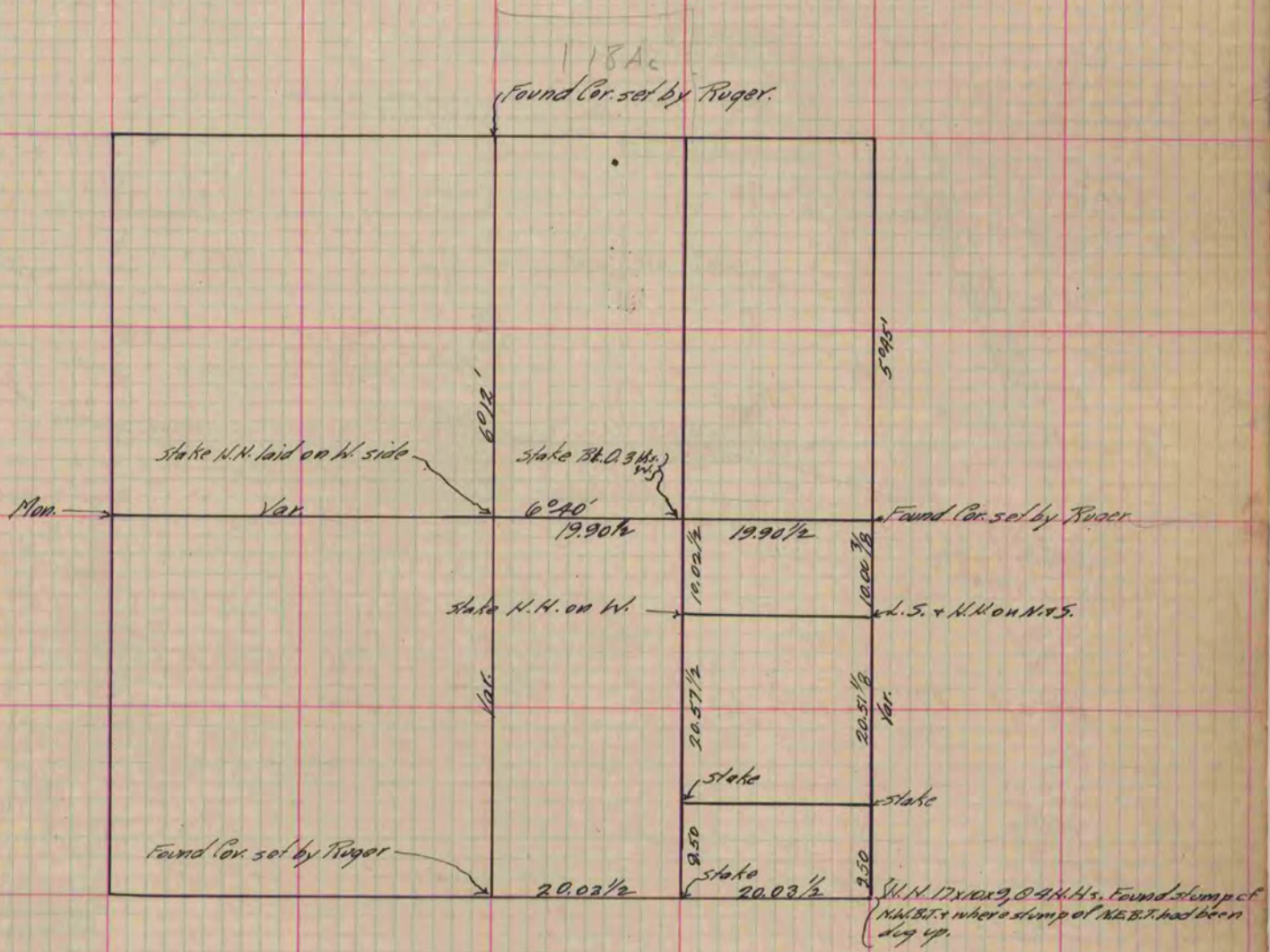
Rock County, Wisconsin, made May the 17 1890

I hereby certify that the following is a correct record of said survey as made by me.

COUNTY BUILDING
IN CITY OF БЕЛОIT

(Signed) O. G. Bleedorn
O. G. B.

Dep. County Surveyor.



Copied From P. 349 Vol. 2 County Surveyors Record.