

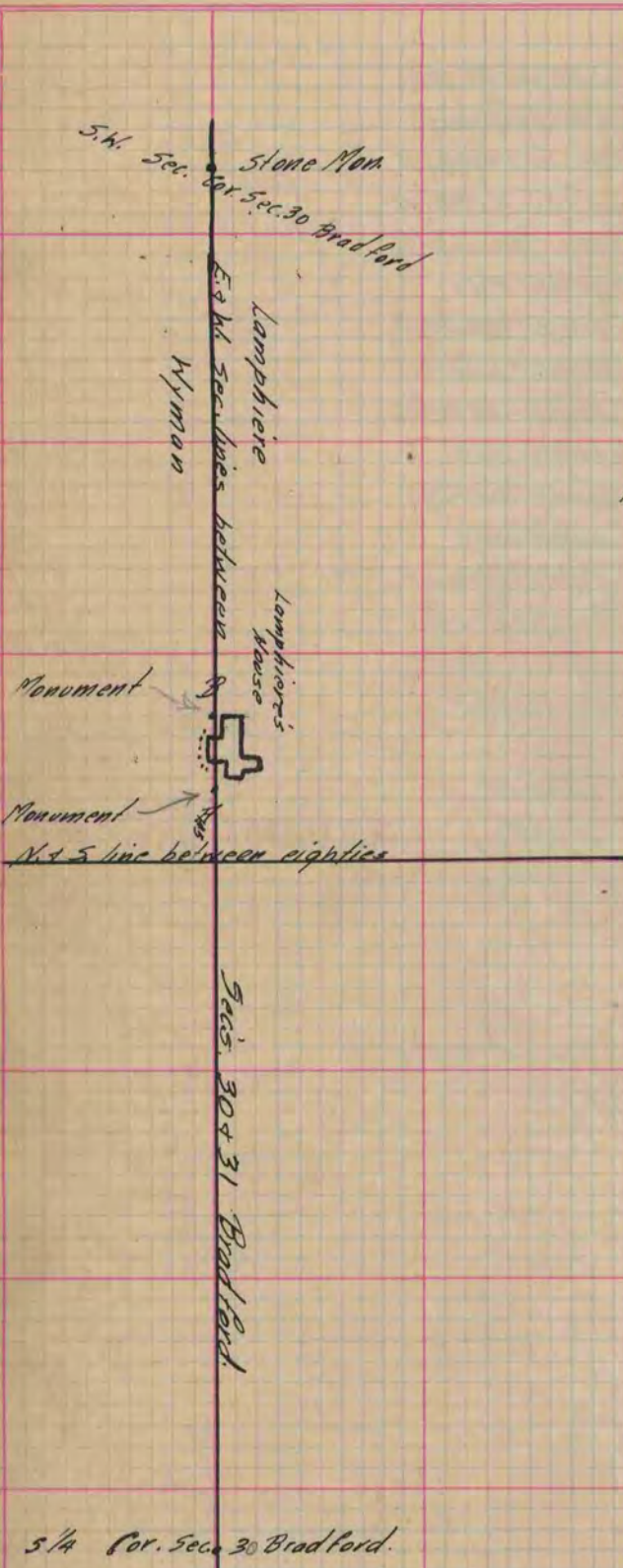
PLAT AND RECORD

Of a Survey on Sections 30 & 31 T 2 R 19 E. of the 4 P. M. in Bradford Township
Rock County, Wisconsin, made April the 30 1877

**COUNTY BUILDING
IN CITY OF БЕЛОIT**

I hereby certify that the following is a correct record of said survey as made by me.

(Signed) Edward Roger
County Surveyor.



I hereby certify this to be a correct plot, and the following to be a correct Record of a Survey made by me April 30th 1877 of the Sec. line between the S.W. 1/4 of Sec. 30 & the N.W. 1/4 of Sec. 31 of the Town of Bradford to ascertain whether any portion of Mr. Lamphiere's house extended S. of said Sec. line. From the S.W. cor. & also from the S. 1/4 Cor. of Sec. 30. I offsetted 5.60 lks. & run a right line between said offsetted points with an Engineer's Transit, & at determined points in said line opposite & adjacent to either side of the house, then offsetted, from said points 60 lks. & estab. Monuments in said said Sec. line at points "A" & "B." shown on the plat. I found that at the E. face of the main building of Lamphiere's house, said main part of the house or building extended S. of the Sec. line 5 ft. + 3 in. & including the Veranda 10 ft. + 5 in. & that at the W. face of said Main part of building extended S. of the Sec. line 5 ft. + 9 inches & including the Veranda 10 ft. + 11 inches.

The Mon. at A consists of a limestone 18" long by 9" wide by 3" thick @ by a lot of small H. Hs. The Mon. is on the Sec. line & 1.45 chains W. of line between eighties & 8 1/2 lks. E. of E. face of E. wing of house produced.

The Mon. at B. consists of a limestone 14" long by 6" wide by 3" thick @ by A.H.Hs. It is on said Sec. line & 3 ft. + 9" W. of W. face of W. wing of house produced

Surveyed April 30-1877
(Signed) Edward Roger
County Surveyor.

Copied From P. 176 Vol. 2 County Surveyor's Record.