

PLAT AND RECORD

331

Of a Survey on Section 35 T 3 R 12 E. of the 4 P. M. in Sarasville Township
Rock County, Wisconsin, made September the 12th & 21st 1881

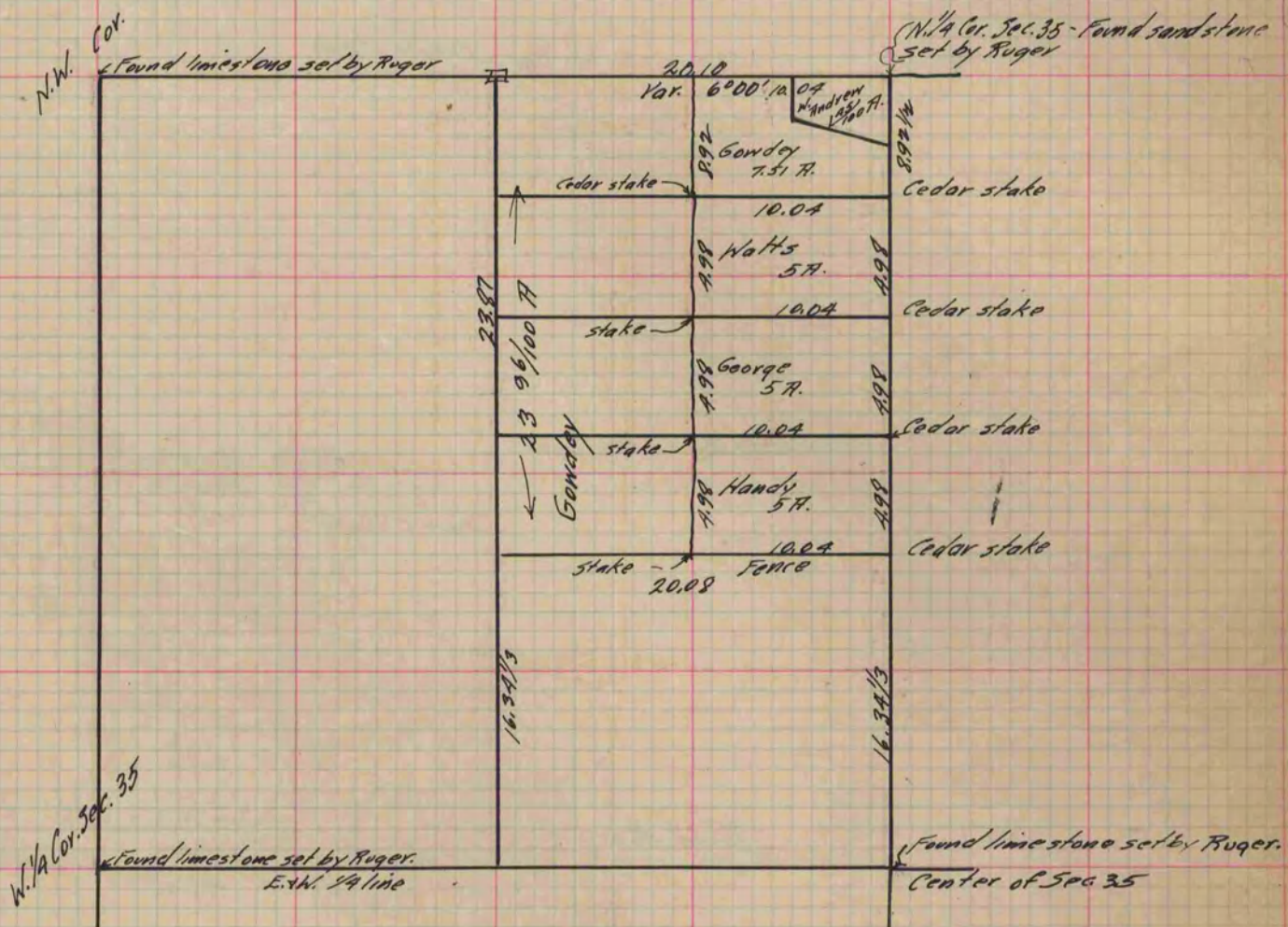
I hereby certify that the following is a correct record of said survey as made by me.

COUNTY BUILDING
IN CITY OF BELOIT

(Signed) R. K. Lee
RKL

County Surveyor.

The N. 5 ACRES was surveyed the 21th



Copied from P. 271 Vol. 2 County Surveyor's Record.