

PLAT AND RECORD

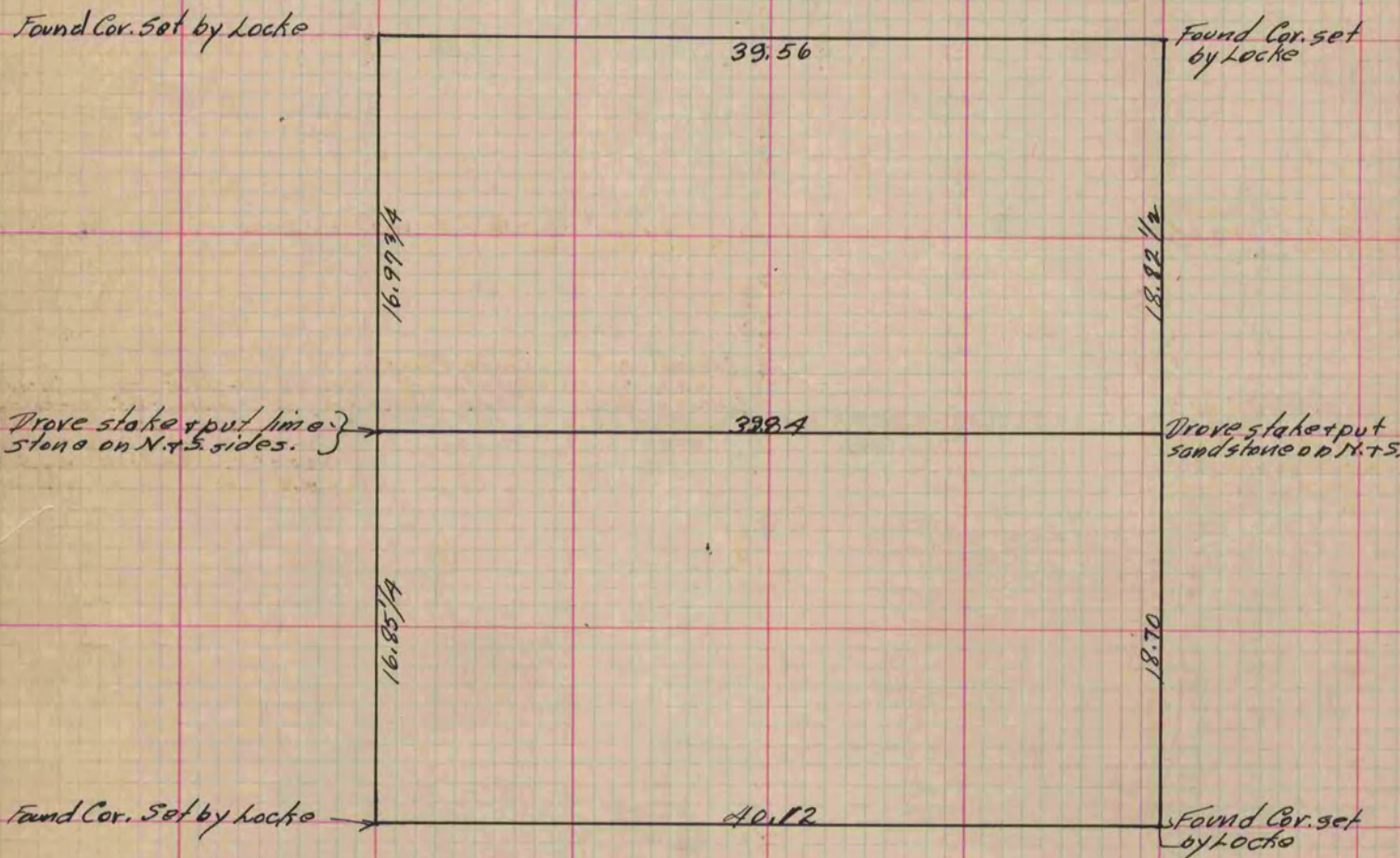
Of a Survey on, Section ^{N.W. 1/4} 1 T 2 R 10 E. of the 4 P. M. in Spring Valley Township

Rock County, Wisconsin, made April the 3rd 1874

I hereby certify that the following is a correct record of said survey as made by me.

COUNTY BUILDING
IN CITY OF BELOIT

(Signed) Edward Ruger
Edw. R. County Surveyor.



Copied from P. 88 Vol. 2 Original County Surveyor's Record.