

PLAT AND RECORD

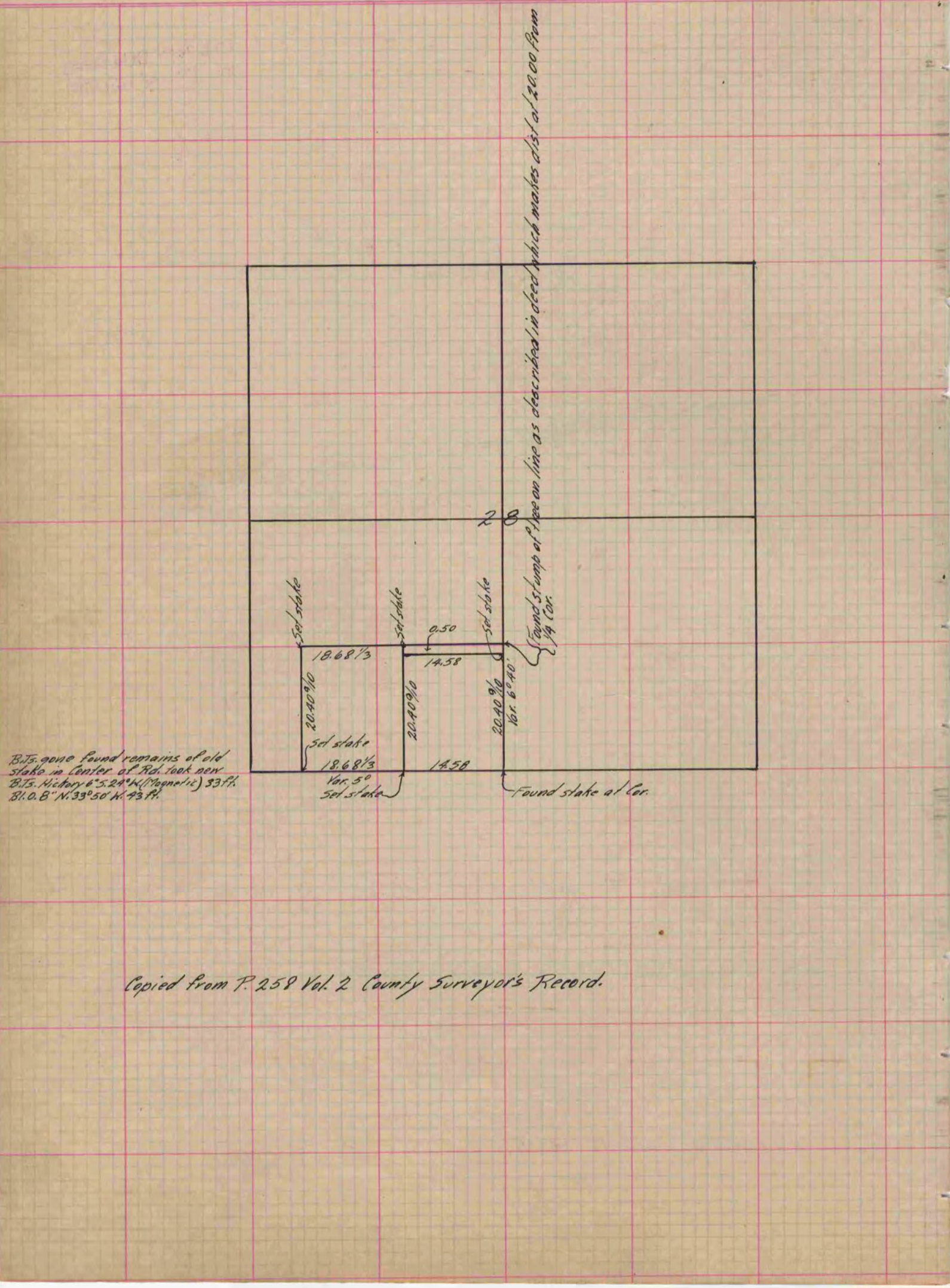
Of a Survey on Section 28 T 2 R 12 E. of the 4 P. M. in Rock Township
 Rock County, Wisconsin, made August the 27th & 28th 1880

I hereby certify that the following is a correct record of said survey as made by me.

COUNTY BUILDING
 IN CITY OF БЕЛОIT

(Signed) R. K. Lee
RKL

Dept.
 County Surveyor.



Copied from P. 258 Vol. 2 County Surveyor's Record.