

PLAT AND RECORD

591

Of a Survey on Section 23 T 1 R 14 E. of the 4 P. M. in Clinton Township

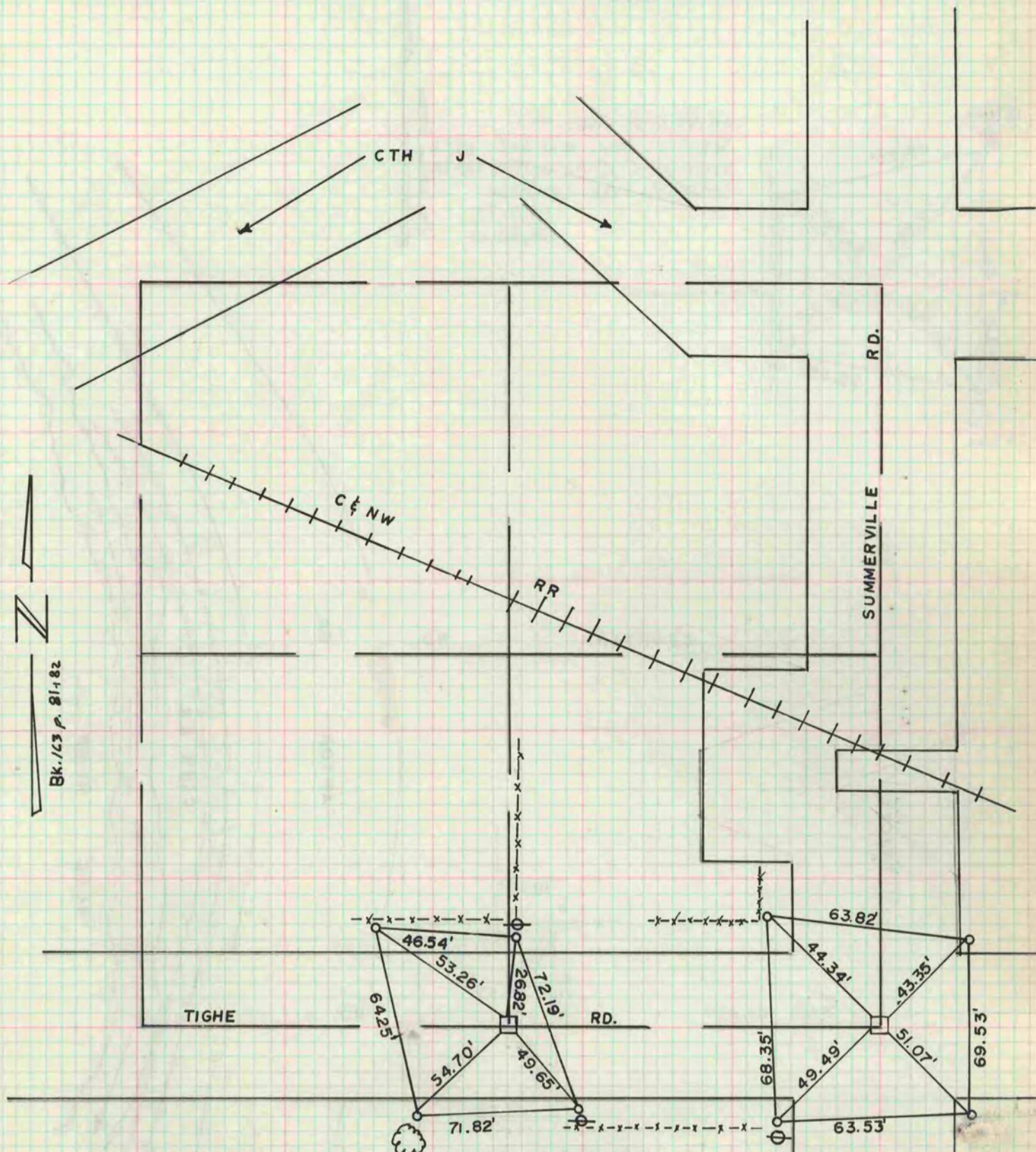
Rock County, Wisconsin, made January the 23rd 19 73

I hereby certify that the following is a correct record of said survey as made by me.

**COUNTY BUILDING
IN CITY OF БЕЛОIT**

Angelo De...
County Surveyor.

THE GEO. D. BARNARD COMPANY, ST. LOUIS



At S 1/4 Cor. Set C.I. Mon.
after locating by traversing
section. Ref. with iron pins.
This corner lies 3' South of
North edge of pvt.

1/23/73
TM
GB

At S.E. Cor. Sec. 23
Set C.I. Mon. after
establishing location
by traversing section
Ref. with iron pins.
This corner lies 3' N.
& 3'E. of centerlines.

1/23/73
TM
GB