

# PLAT AND RECORD

213

Of a Survey on Section 13 T 4 R 14 E. of the 4 P. M. in Lima Township

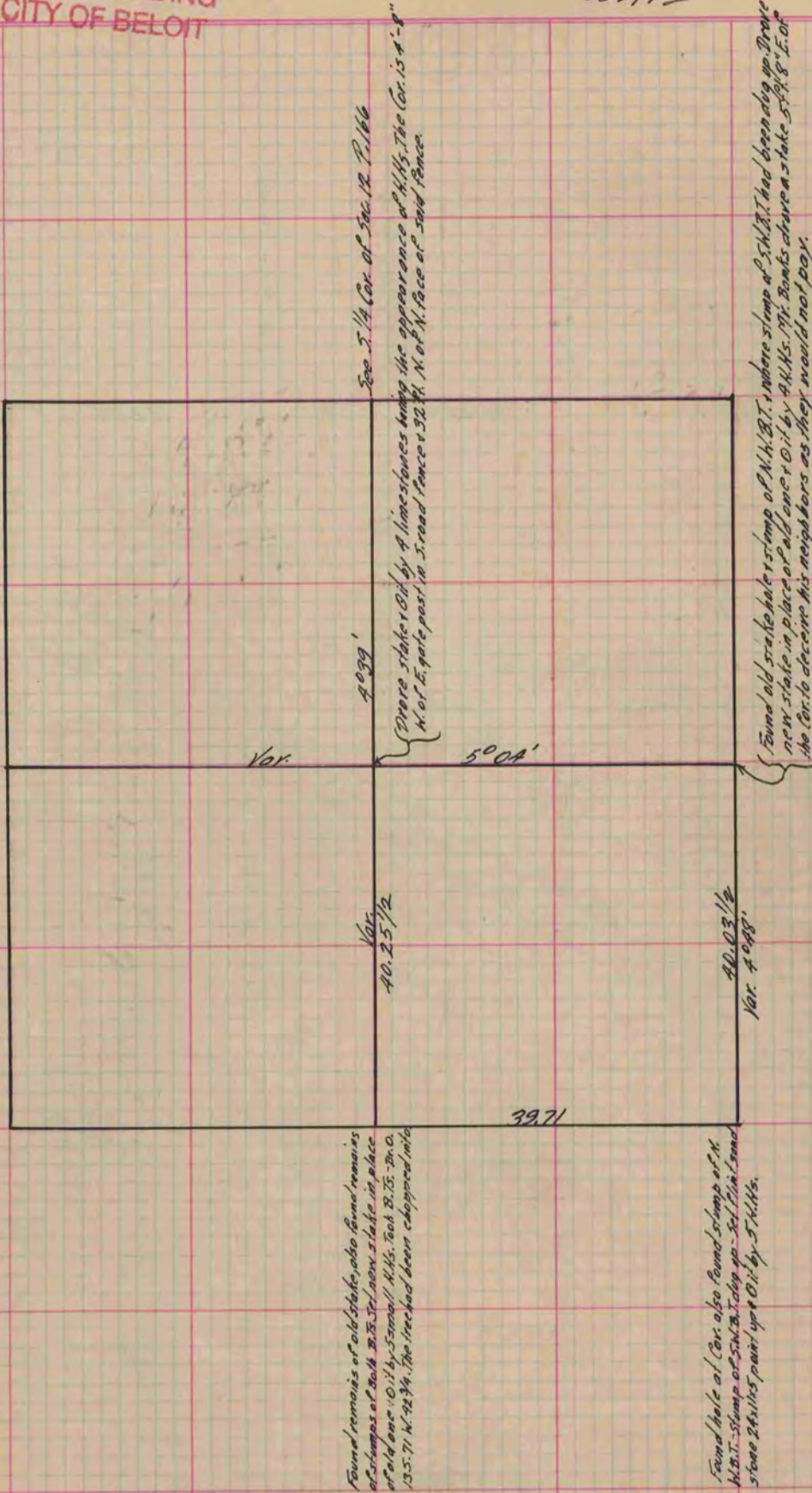
Rock County, Wisconsin, made June the 15 1876

I hereby certify that the following is a correct record of said survey as made by me.

(Signed) Edward Reger  
CR

County Surveyor.

COUNTY BUILDING  
IN CITY OF BELOIT



Copied from P. 167 Vol. 2 Original County Surveyor's Record.