

PLAT AND RECORD

Of a Survey on Section 2 T 2 R 14 E. of the 4 P. M. in Bradford Township

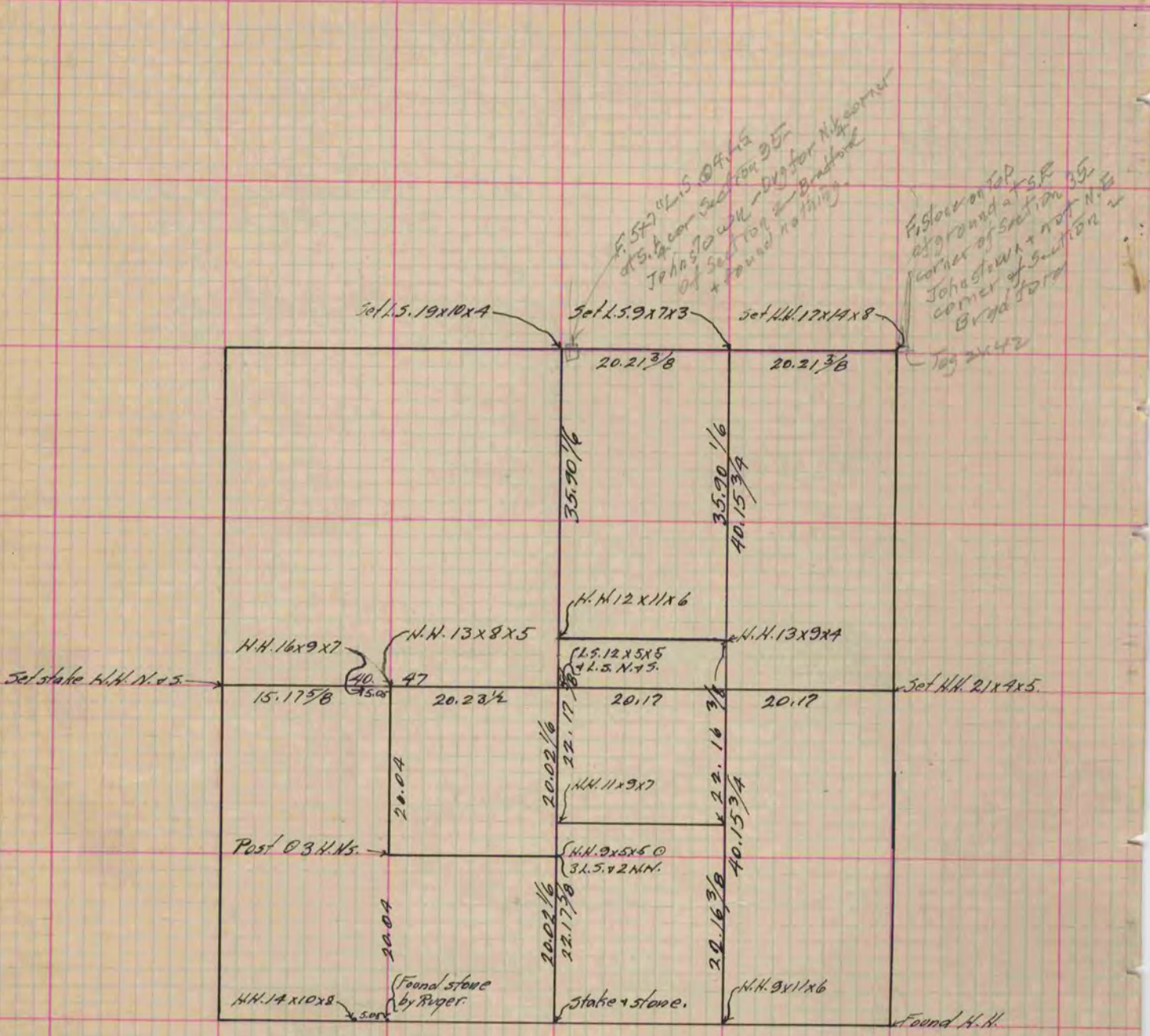
Rock County, Wisconsin, made Apr. the 27 1894

I hereby certify that the following is a correct record of said survey as made by me.

COUNTY BUILDING
IN CITY OF BELOIT

(Signed) P. F. Brown
PFB

County Surveyor.



Copied from P. 383 Vol. 2 County Surveyor's Record.