

PLAT AND RECORD

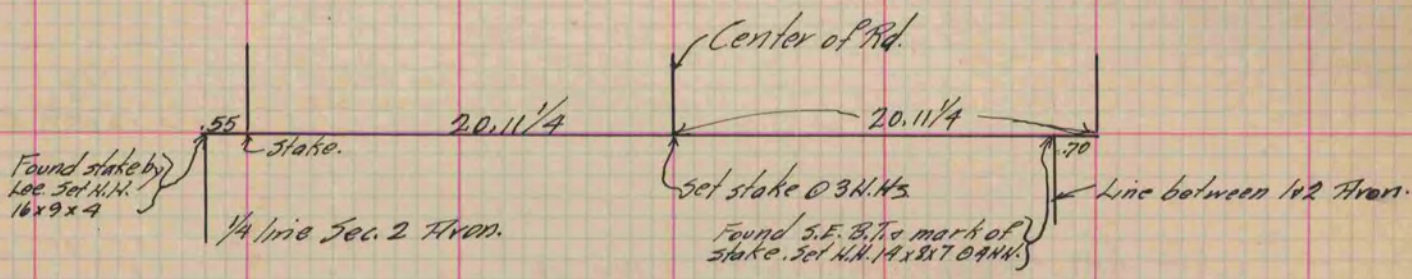
521

Of a Survey on ^{SE 1/4} Section 35 T 2 R 10 E. of the 4 P. M. in Spring Valley Township
Rock County, Wisconsin, made Nov. the 12 1900

I hereby certify that the following is a correct record of said survey as made by me.

COUNTY BUILDING
IN CITY OF BELOIT

(Signed) P.F. Brown
RMB County Surveyor.



Copied from P. 393 Vol. 2 County Surveyors Record.