

# PLAT AND RECORD

**MICROFILMED**

Of a Survey on Section 31 T 4 R 12 E. of the 4 P. M. in Fulton Township

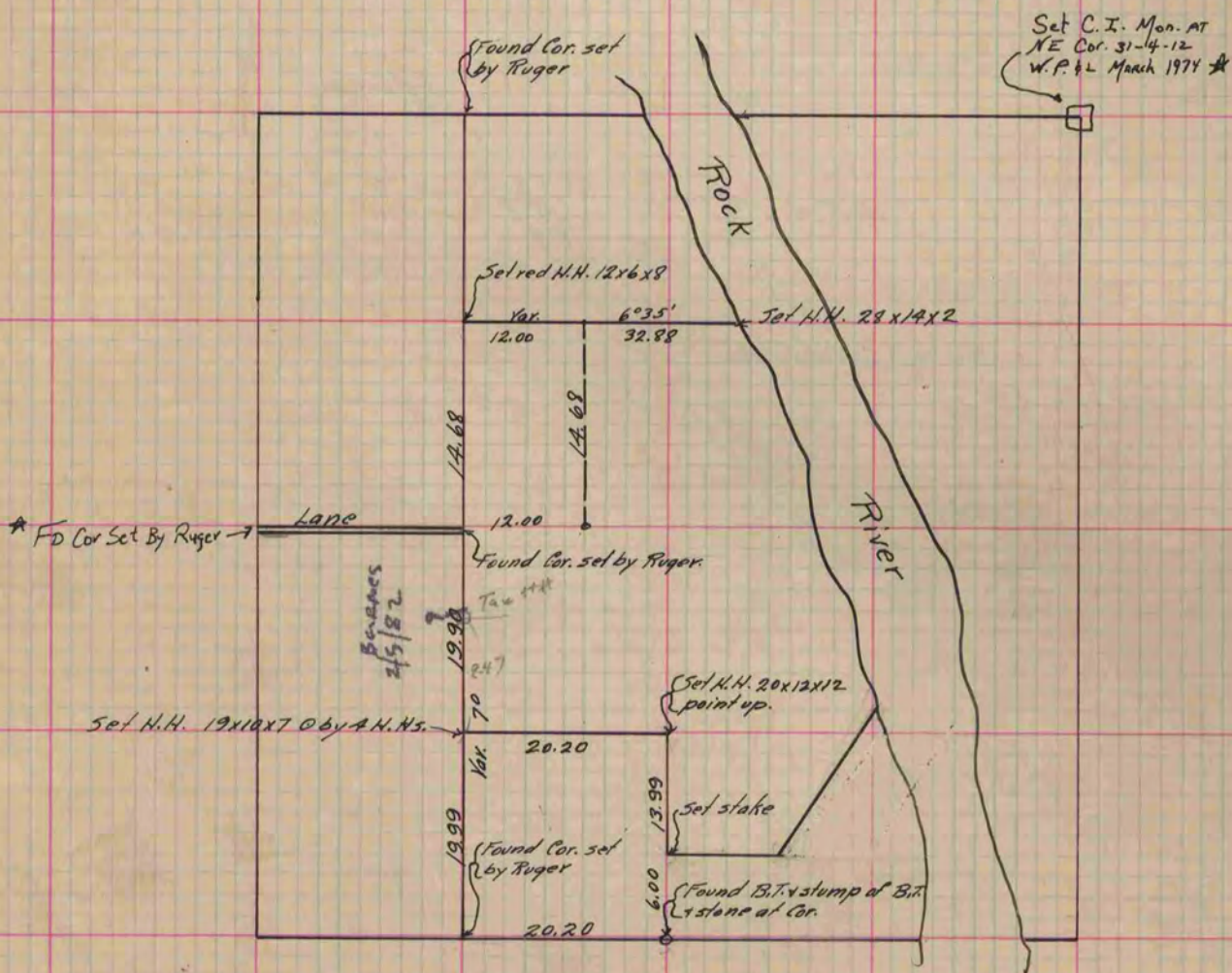
Rock County, Wisconsin, made November the 26<sup>th</sup> & 27<sup>th</sup> 1883

I hereby certify that the following is a correct record of said survey as made by me.

COUNTY BUILDING  
CITY OF JANESVILLE

(Signed) R.H. Lee  
R.H.B.

Dep. County Surveyor.



\* Copied from Beloit Records  
12/11/75  
G.P.

Copied from P. 293 Vol. 2 County Surveyors Record.