

PLAT AND RECORD

Of a Survey on Section 9 T 1 R 13 E. of the 4 P. M. in Turtle Township

Rock County, Wisconsin, made Sept. the 1882

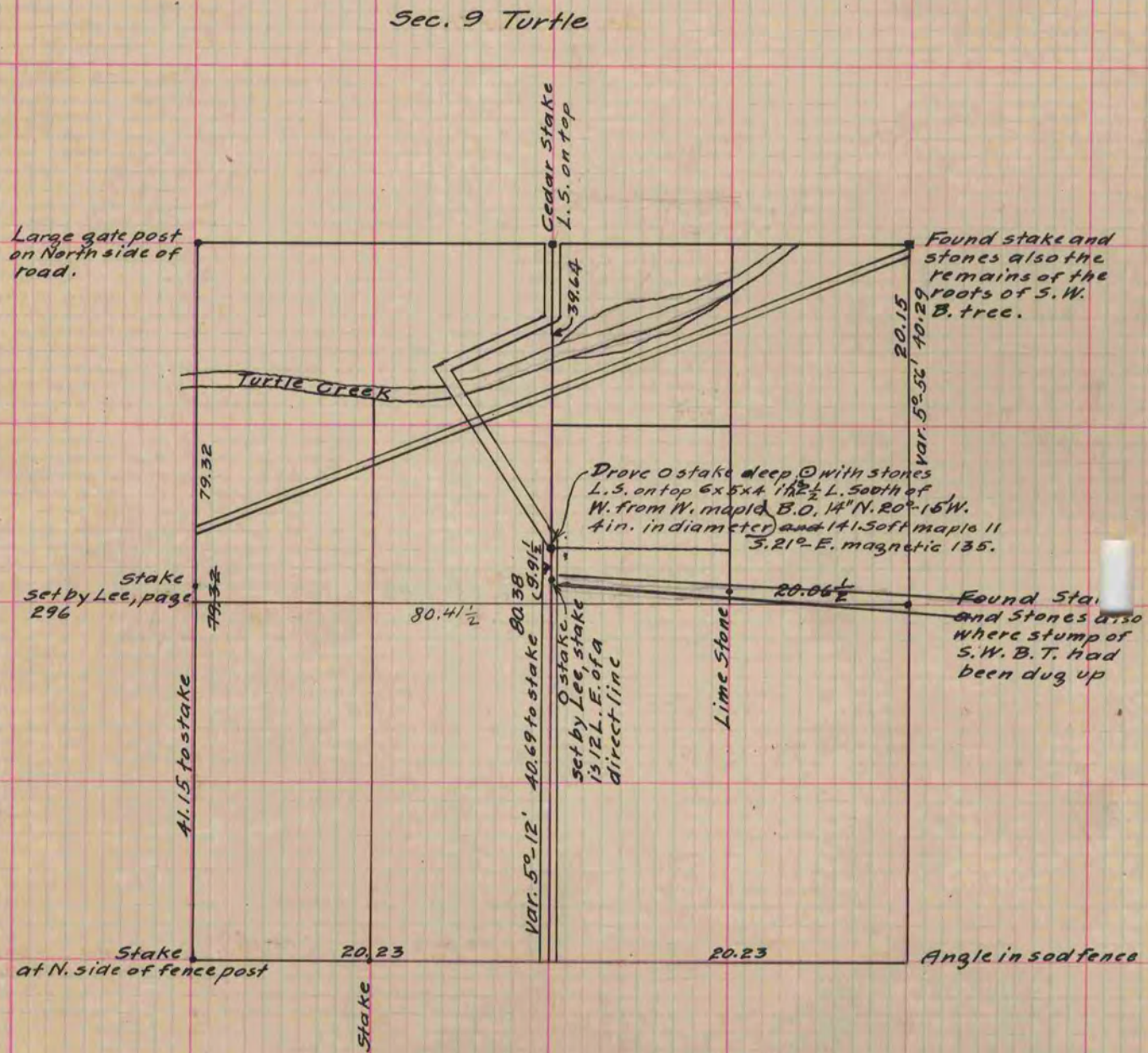
I hereby certify that the following is a correct record of said survey as made by me.

COUNTY BUILDING
CITY OF JANESVILLE

(Signed) J.A. Holmes

R.H.B.

County Surveyor.



Copied from P. 287 Vol. 2 County Surveyors Record