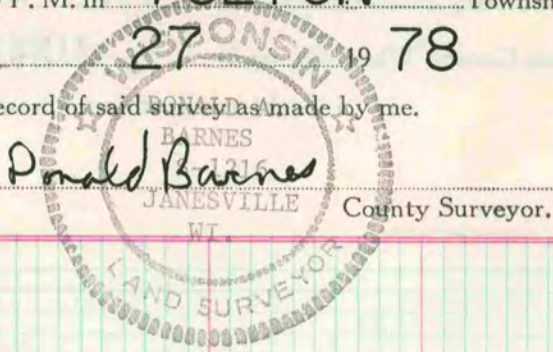


Of a Survey on Section 18 T 4 R 12 E. of the 4 P. M. in FULTON Township

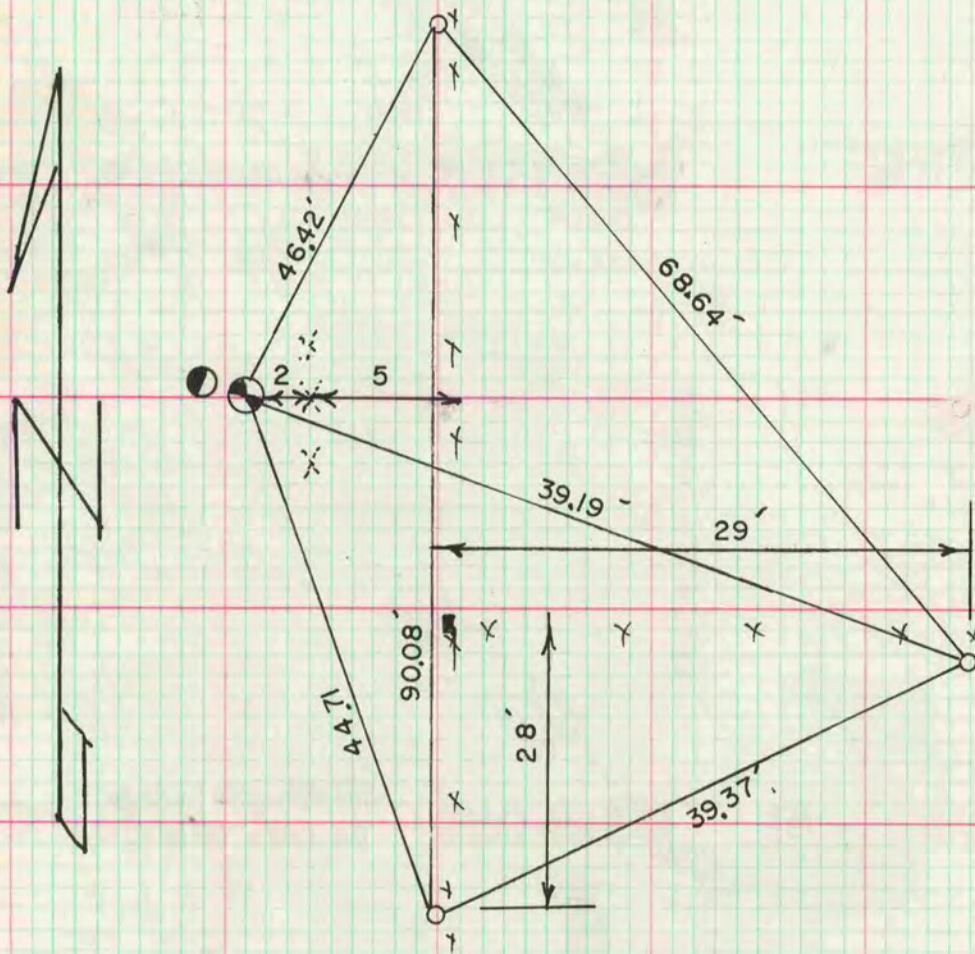
Rock County, Wisconsin, made JUNE 27 1978

I hereby certify that the following is a correct record of said survey as made by me.



E1/4 COR SEC 18

DUG & FOUND NOTHING. SET ALUM MON ON LINE WITH THE SE & NE COR AT SINGLE PROPORTIONATE DISTANCE, CSM VOL 2 PG 65 & CSM VOL 3 PG 167 <sup>USED THE</sup> CORNER BUT IT WAS NOT MONUMENTED. A PLAT OF SURVEY BY H LEE (1973) ALSO USED THIS CORNER. INFORMATION SUPPLIED BY WPL & CSM VOL 7 PG 147 INDICATES THAT THE RR RAIL WAS ACCEPTED AS CORNER.



MICROFILMED

	STATE COORDINATES
● ALUM MON	296,763.91 ; 2,238,473.49
■ RR RAIL	296,747.64 ; 2,238,480.77
● RW POST	
○ 1 1/4" X 24" IP	