

# PLAT AND RECORD

**MICROFILMED**

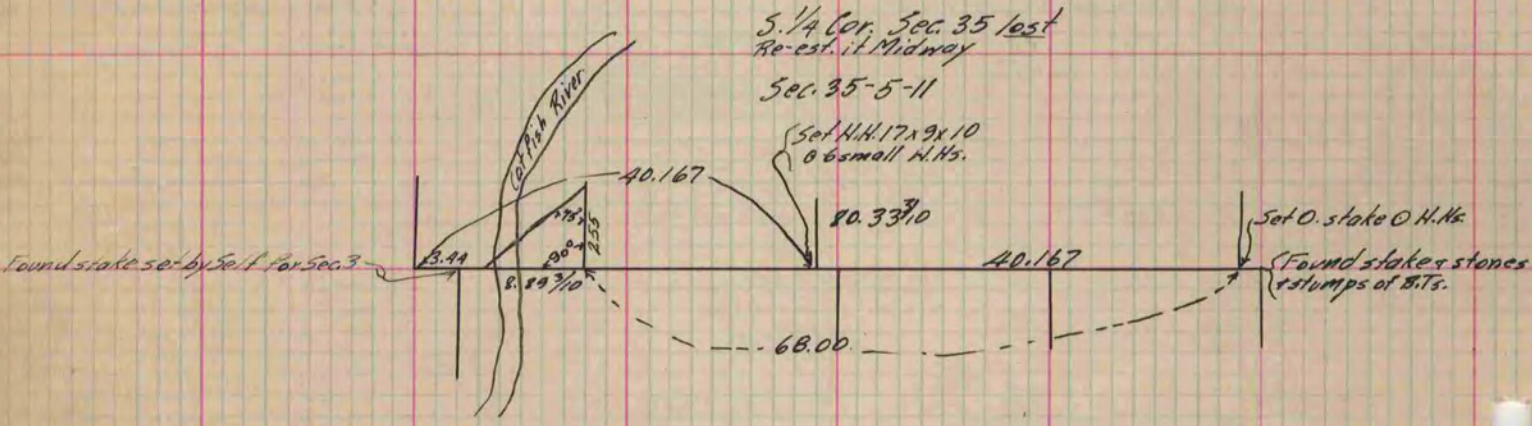
Of a Survey on Section 35 T 5 R 11 E. of the 4 P. M. in Dunkirk Township

Dane County, Wisconsin, made June 20<sup>th</sup> the 1888

I hereby certify that the following is a correct record of said survey as made by me.

COUNTY BUILDING  
CITY OF JANESVILLE

(Signed) R. K. Lee Dep. County Surveyor.  
R. A. B.



Copied from P. 341 Vol. 2 County Surveyor's Record.