

MICROFILMED PLAT AND RECORD

Of a Survey on Section 30 T 1 R 13 E. of the 4 P. M. in Turtle Township

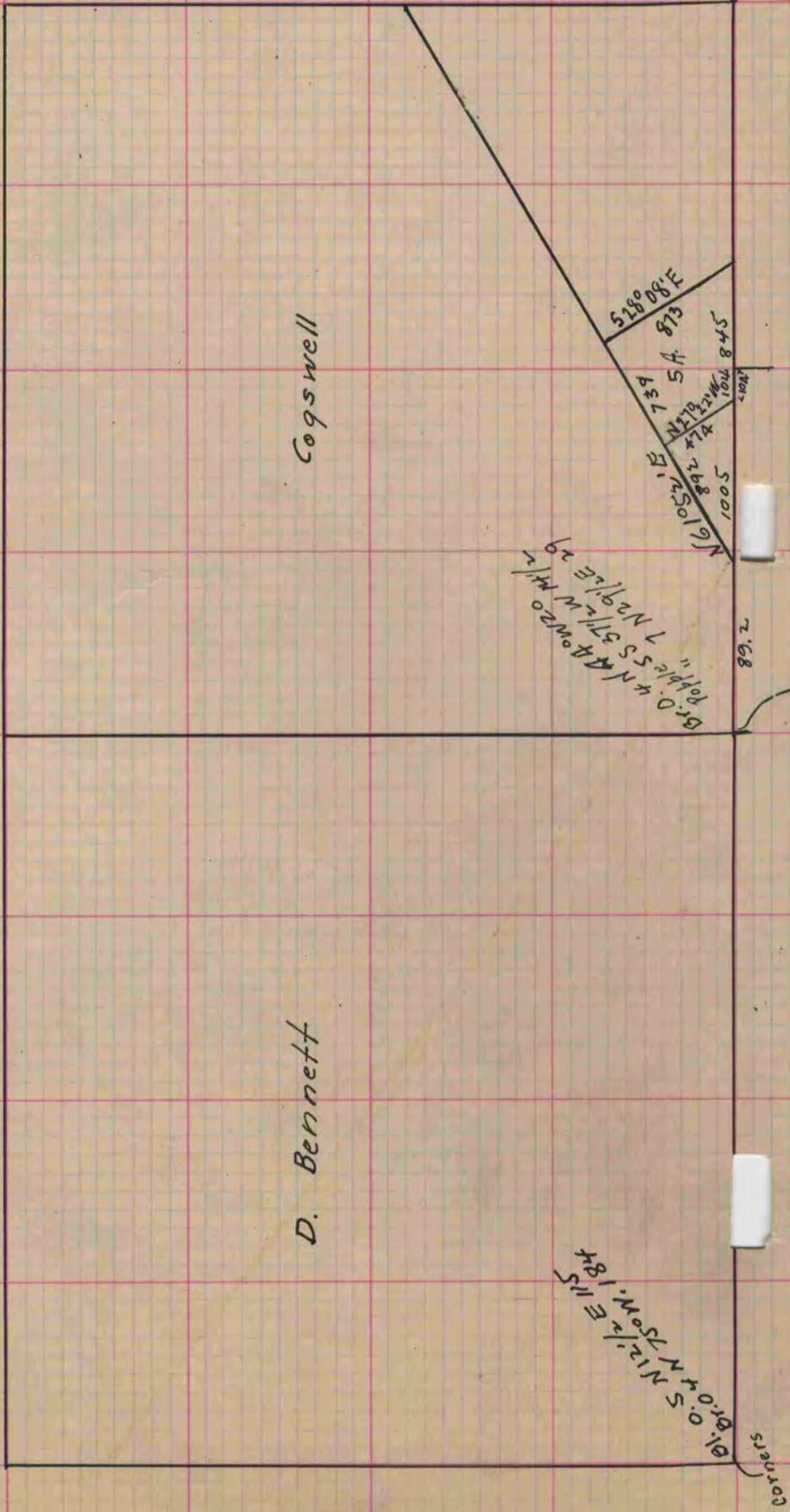
Rock County, Wisconsin, made June the 10th 1859

I hereby certify that the following is a correct record of said survey as made by me.

COUNTY BUILDING
CITY OF JANESVILLE

County Surveyor.

Courses according to the true meridian
Variation 5°30'
Measurements in links.



Cogs well

D. Bennett

B. O. S. N 12 1/2 E 115
Brow N 75 W 184
B. O. W. N 40 W 20
B. O. W. S 37 1/2 W 112