

PLAT AND RECORD

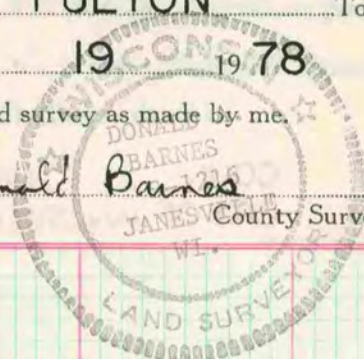
COUNTY BUILDING  
CITY OF JANESVILLE

Of a Survey on Section 24 T 4 R 12 E. of the 4 P. M. in FULTON Township

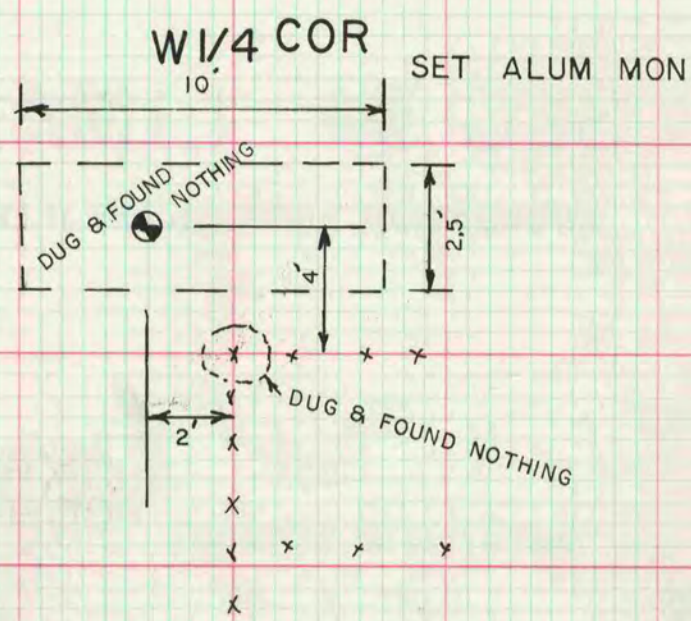
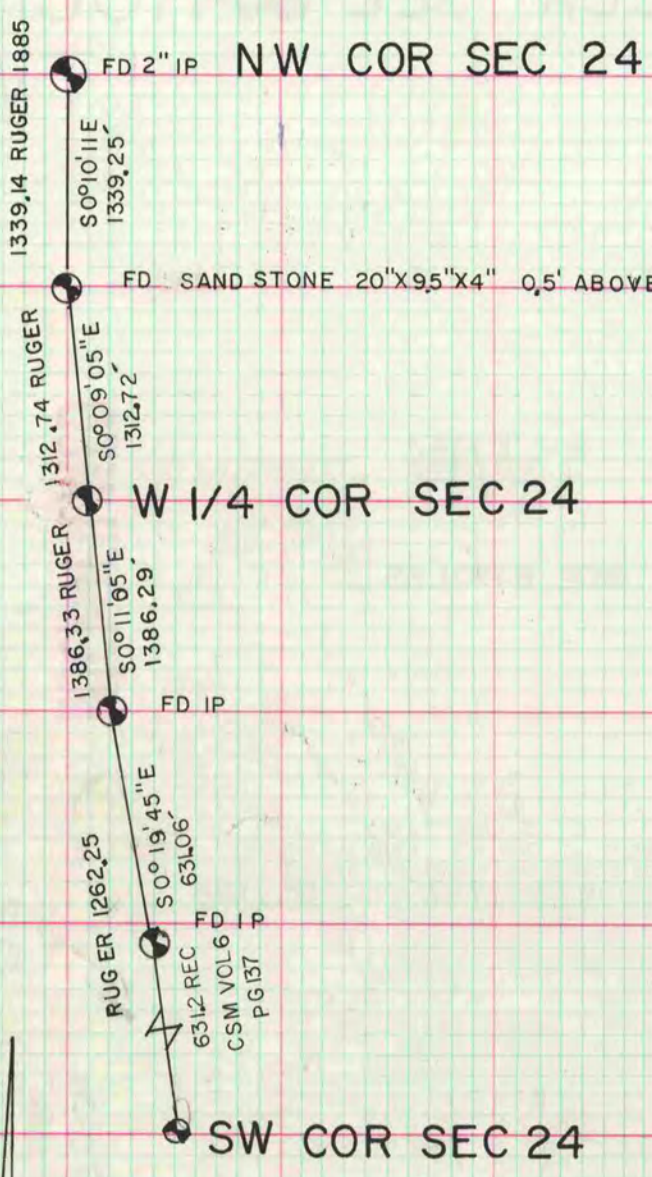
Rock County, Wisconsin, made OCTOBER the 19 19 78

I hereby certify that the following is a correct record of said survey as made by me.

Donald Barnes  
JANESVILLE County Surveyor.

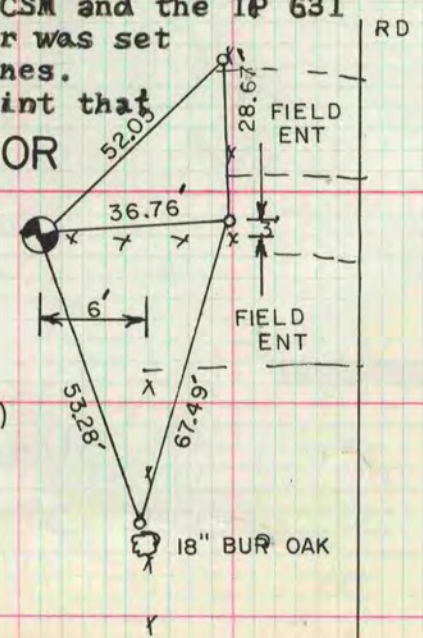


MICROFILMED



The  $W\frac{1}{4}$  corner was established by projecting the NW corner of sec 24 and the sandstone and by projecting the IP of the CSM and the IP 631 north of that. The corner was set midway between the two lines. This is 1.30 WEST of a point that would be on a straight line  $NW$  between the NW and the IP of the CSM

FD 2X40" IP  
REPLACED  
WITH ALUM  
MON (1.5 DEEP)



o 114" X 24" IP

ASSUMED