

# PLAT AND RECORD

COUNTY BUILDING  
CITY OF JANESVILLE

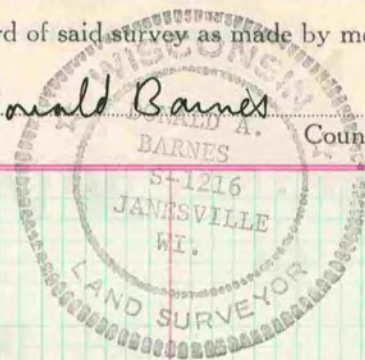
499  
VOL. 5

Of a Survey on Section **16** T. **2** R. **10** E. of the 4 P. M. in **SPRING VALLEY** Township  
Rock County, Wisconsin, made **NOV** the **27** 19**78**

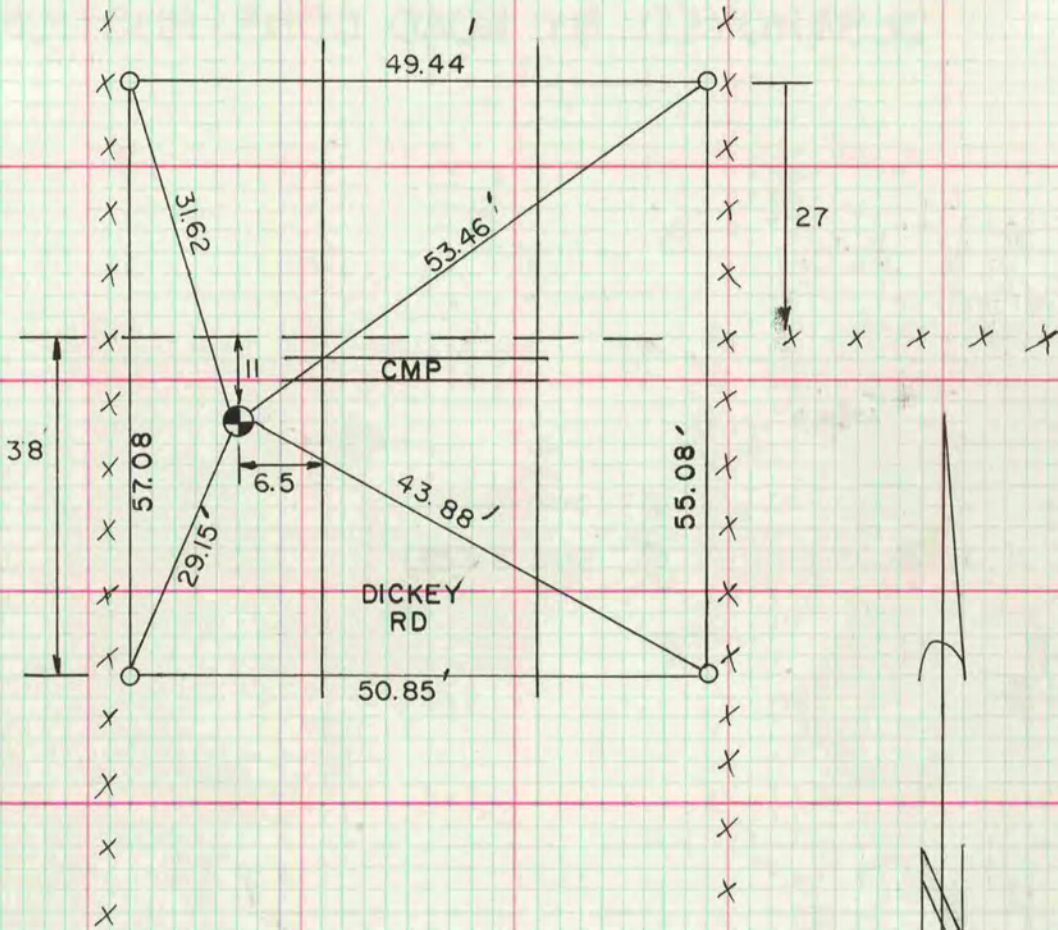
I hereby certify that the following is a correct record of said survey as made by me.

*Donald Barnes*

County Surveyor.



## CENTER SEC 16



O - 1 1/4" x 24" I.P.

FD. 1/2" RE ROD SET BY OTTO S. HE ESTABLISHED THE CORNER BY INTERSECTING THE N/S & E/W QUARTER LINES

NOTE:  
FIELD NOTES ARE IN PLYMOUTH TWP. FIELD BOOK

**MICROFILMED**