

PLAT AND RECORD

545

COUNTY BUILDING
CITY OF JANESVILLE

VOL. 5

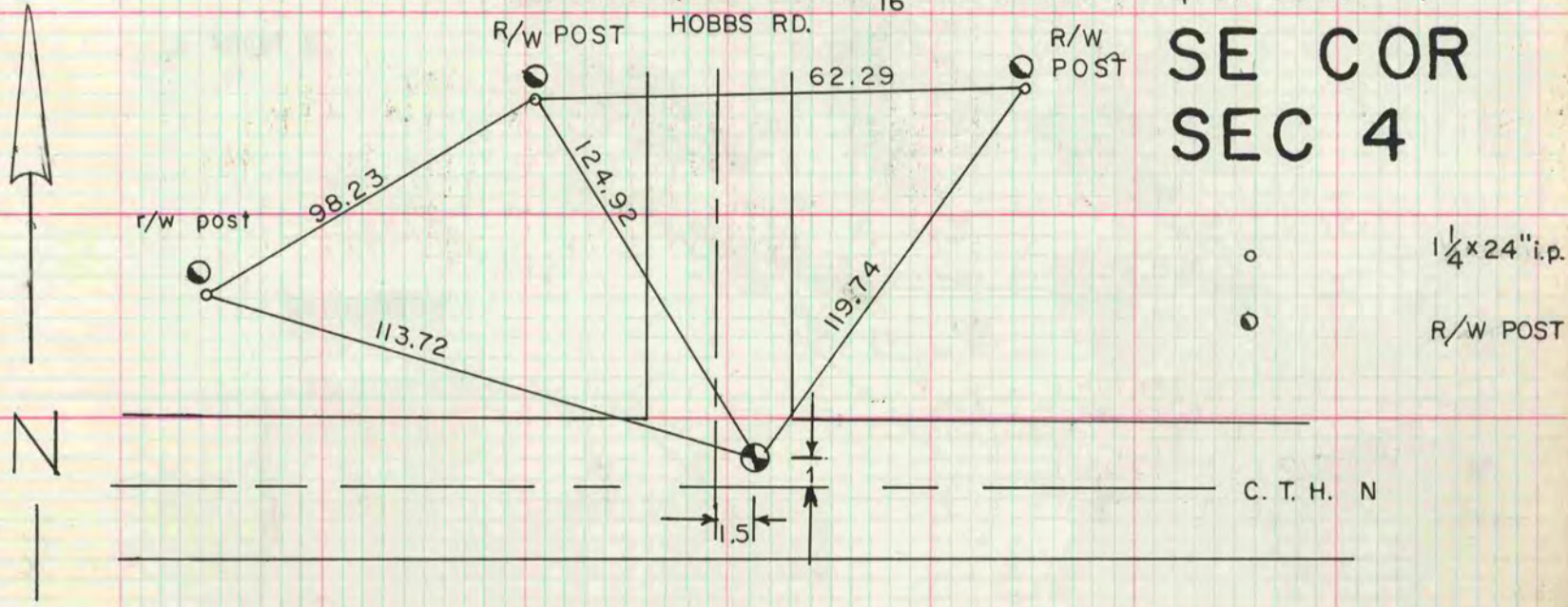
Of a Survey on Section **3, 4** T **4** R **14** E. of the 4 P. M. in **LIMA** Township
Rock County, Wisconsin, made **JUNE** the **13** 19 **79**

I hereby certify that the following is a correct record of said survey as made by me.

Ronald Barnes
DONALD A. BARNES
JANESVILLE
WI.
County Surveyor.

VOL 3 PAGE 434 FORMER COUNTY SURVEYOR STATES CORNER WAS DESTROYED IN 1938. SET PK/BRASS FLASHER AT PROPORTIONATE DIST. FROM THE S¹/₄ COR OF SEC 4, THE E¹/₄ COR OF SEC 4, THE SE COR OF SEC 3, & THE E¹/₁₆ COR OF THE NE¹/₄ OF SEC 9

**SE COR
SEC 4**



MICROFILMED

S¹/₄ COR SEC 3

1968 FORMER COUNTY SURVEYOR DUG AND FOUND NOTHING. SET ALUM. MON. ON LINE WITH THE SE & SW CORNERS OF SEC 3 AT SINGLE PROPORTIONATE DISTANCE

