

PLAT AND RECORD

MICROFILMED

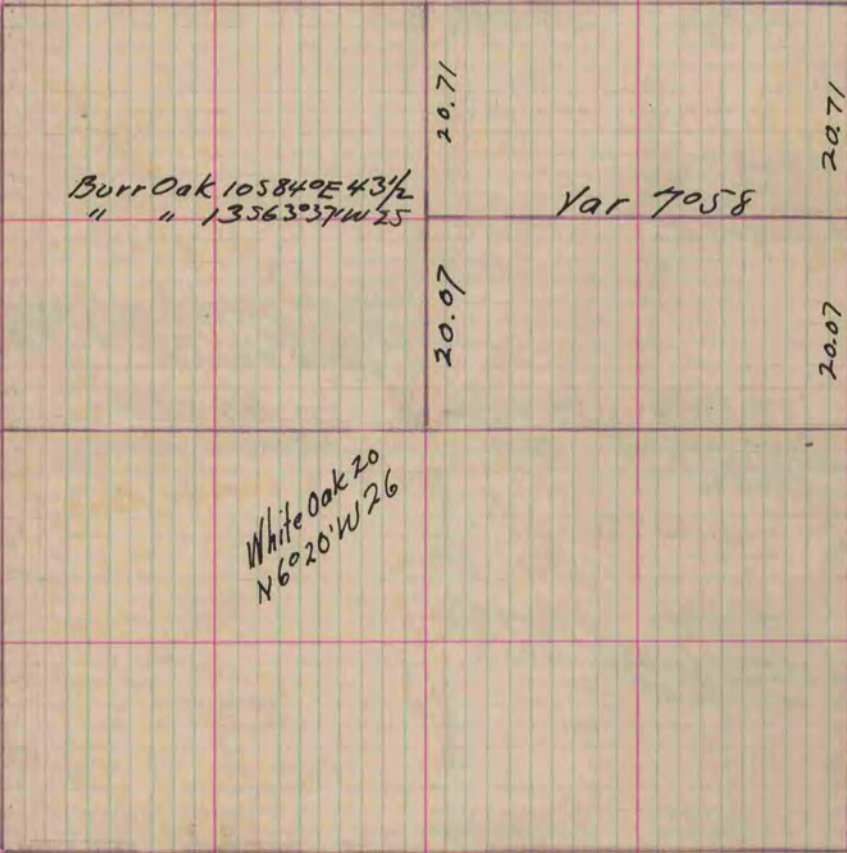
Of a Survey on Section 5 T 3 R 12 E. of the 4 P. M. in Janesville Township

Rock County, Wisconsin, made October the 8th 1860

I hereby certify that the following is a correct record of said survey as made by me.

COUNTY BUILDING
CITY OF JANESVILLE

(Signed) Edward Ruger
R.H.B. County Surveyor.



Copied from Page 151 Vol. 1. Original County Surveyors Record