

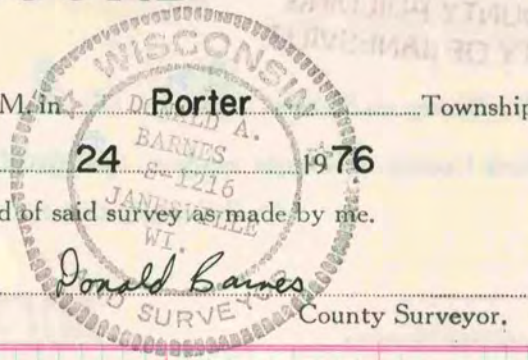
# PLAT AND RECORD

COUNTY BUILDING  
CITY OF JANESVILLE

Of a Survey on Section 31 T 4 R 11 E. of the 4 P. M. in Porter Township

Rock County, Wisconsin, made August the

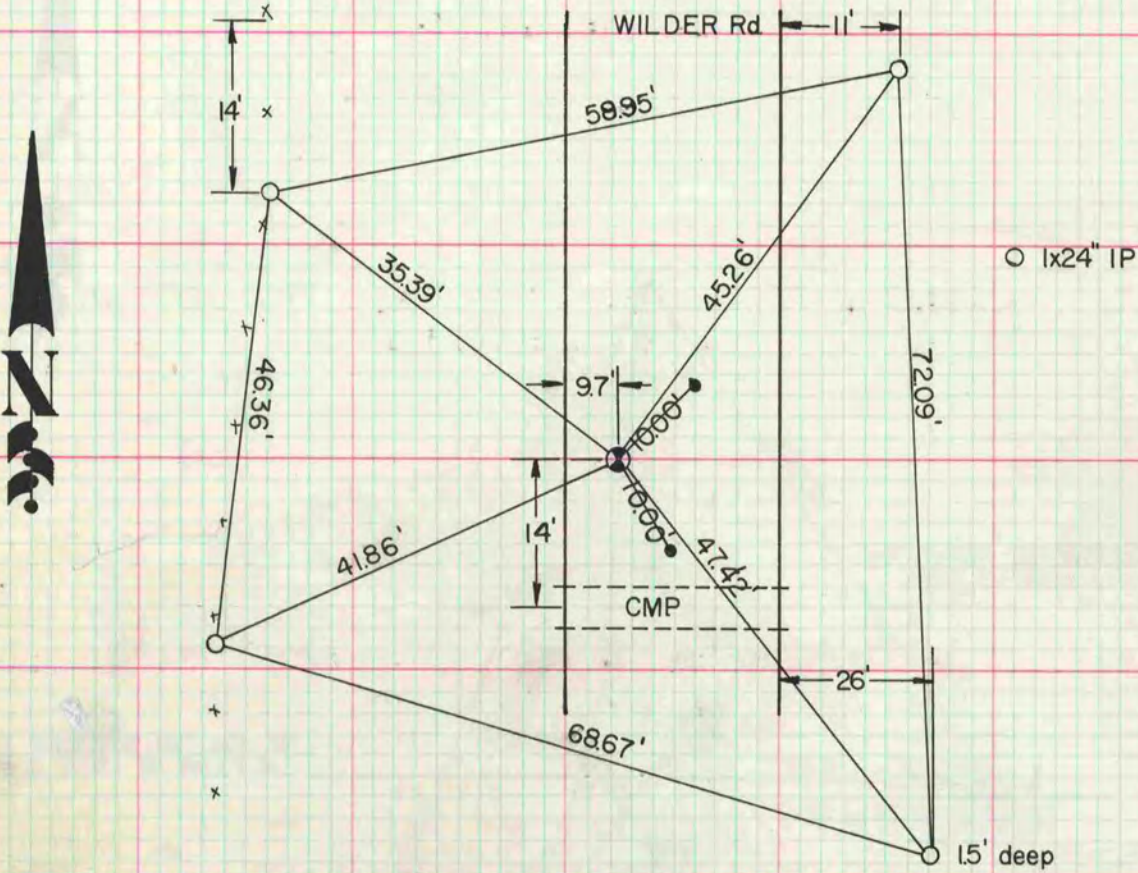
I hereby certify that the following is a correct record of said survey as made by me.



## MICROFILMED

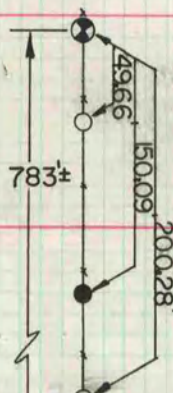
### Center Sec 32

Dug & found 5' Deep  
Stake  $\odot$  4HH  
Set  $\frac{1}{2}$ " x 24" IP



### SE Cor. Sec. 31

Fd. HH stone 26"x12"x9"  
point up.



Note: All pipes are on line with section corner.

- $\circ$   $\frac{1}{2}$ " x 24" IP w cap
- $\bullet$   $\frac{1}{2}$ " x 24" IP

Placed 2 R/R SPIKES IN horizontal pos. on east side of HH.

