

MICROFILMED

PLAT AND RECORD

Of a Survey on Section 22 T 4 R 14 E. of the 4 P. M. in Lima Township

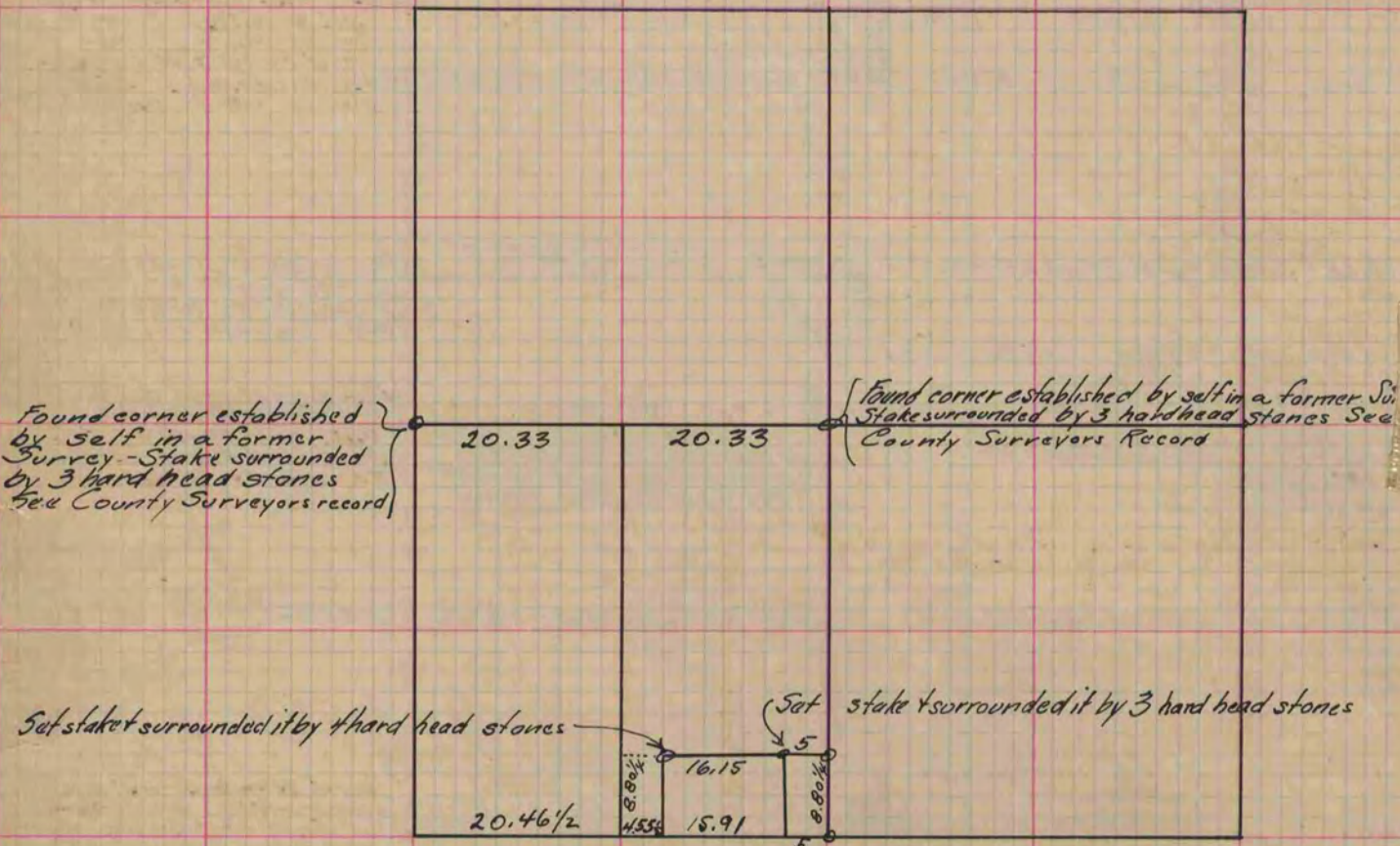
Rock County, Wisconsin, made March the 27 1871

I hereby certify that the following is a correct record of said survey as made by me.

COUNTY BUILDING
CITY OF JANESVILLE

(Signed) Edward Ruger
R.H.B.

County Surve



For Corners on South side of Sec. 22 - See plat & record of Sec. 27 above

Copied from page 35 Vol. 2. Original County Surveyors Record