

MICROFILMED

PLAT AND RECORD

Of a Survey on Section 22 T 3 R 14 E. of the 4 P. M. in Johnstown Township

Rock County, Wisconsin, made April the 3rd 1895

I hereby certify that the following is a correct record of said survey ~~as made by me.~~

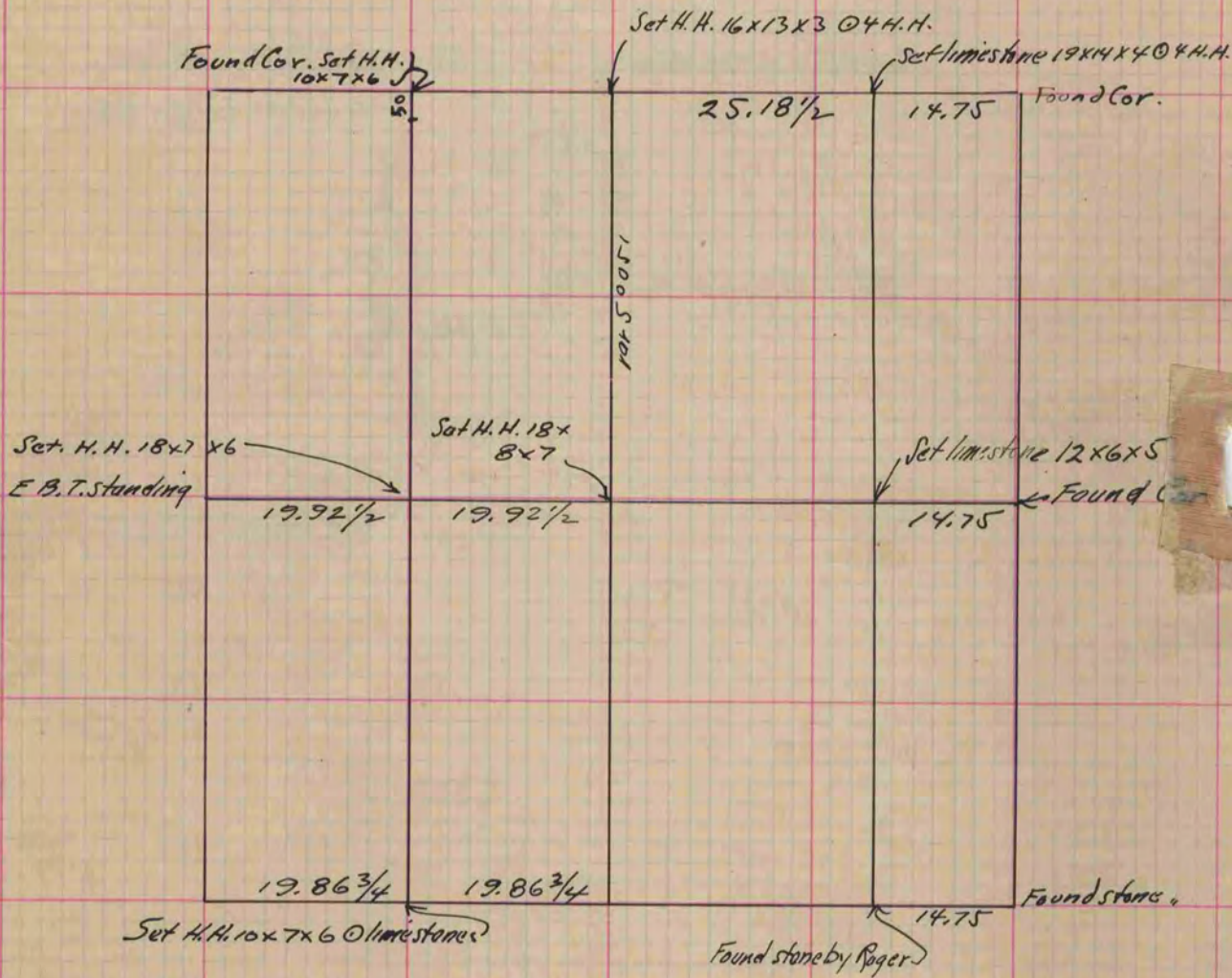
COUNTY BUILDING
CITY OF JANESVILLE

(Signed) P. F. Brown
R. H. B.

County Surveyor

The following plats & records were taken by me from the
Field notes of the late O. G. Bleedorn

(Signed) P. F. Brown
R. H. B.
County Surveyor for unexpired term.



Copied from P. 378 Vol. 2. County Surveyors Record.