

# 288 VOL. 5 PLAT AND RECORD

Of a Survey on Section 25 26 T 4 R 12 E. of the 4 P. M. in FULTON Township  
 Rock County, Wisconsin, made MAY the 24 1977

COUNTY BUILDING  
 CITY OF JANESVILLE

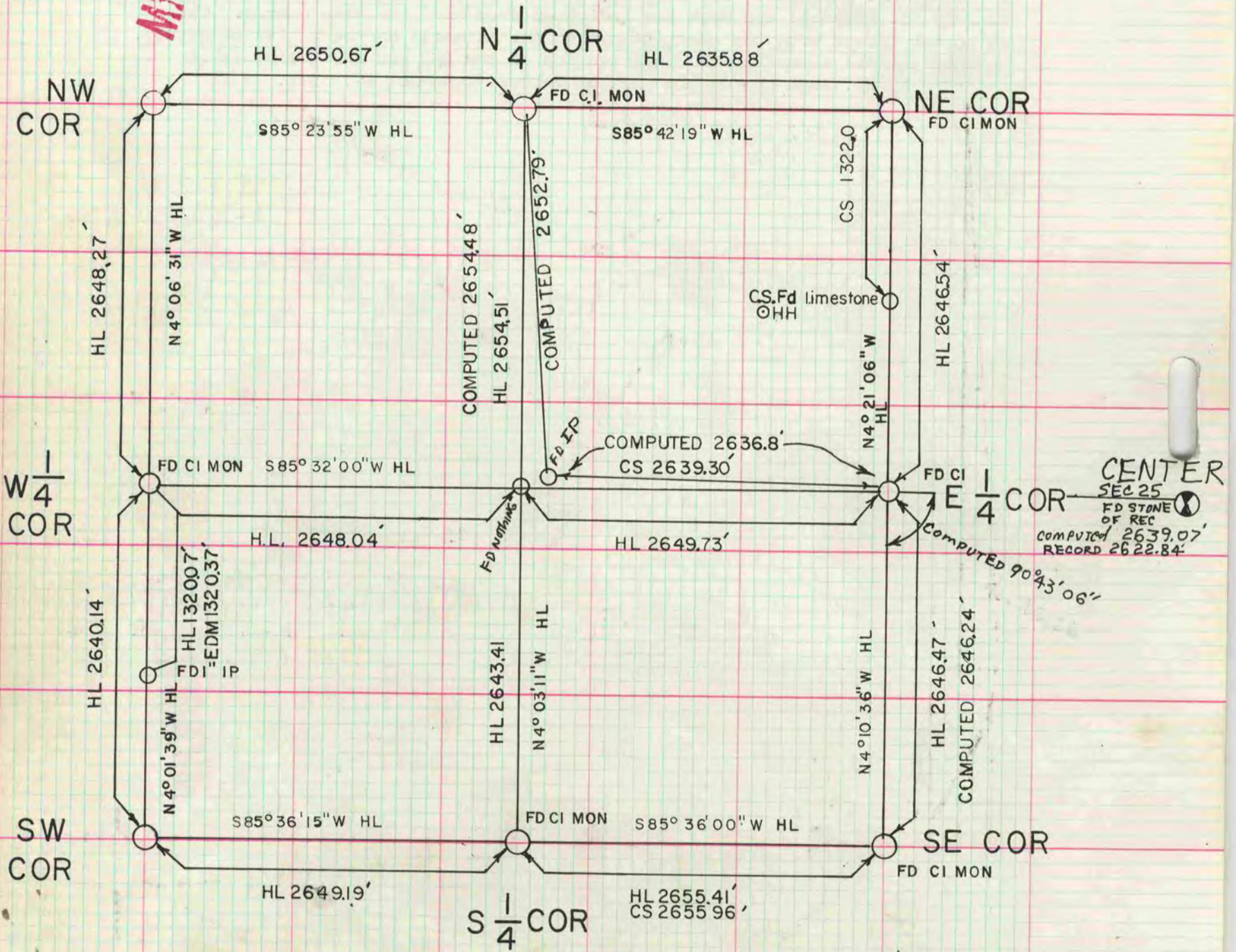
I hereby certify that the following is a correct record of said survey as made by me

*Ronald Barnes*  
 DONALD A. BARNES  
 S-1216  
 County Surveyor.



MICROFILMED

## SEC 26



E 1/4 COR TO W 1/4 COR  
 COMPUTED 5296.2'  
 H.L. 5297.77'

CS CLAYTON SHIMEALL  
 HL HUGH LEE