

PLAT AND RECORD

MICROFILMED

Of a Survey on Section 9 T 1 R 10 E. of the 4 P. M. in Aron Township

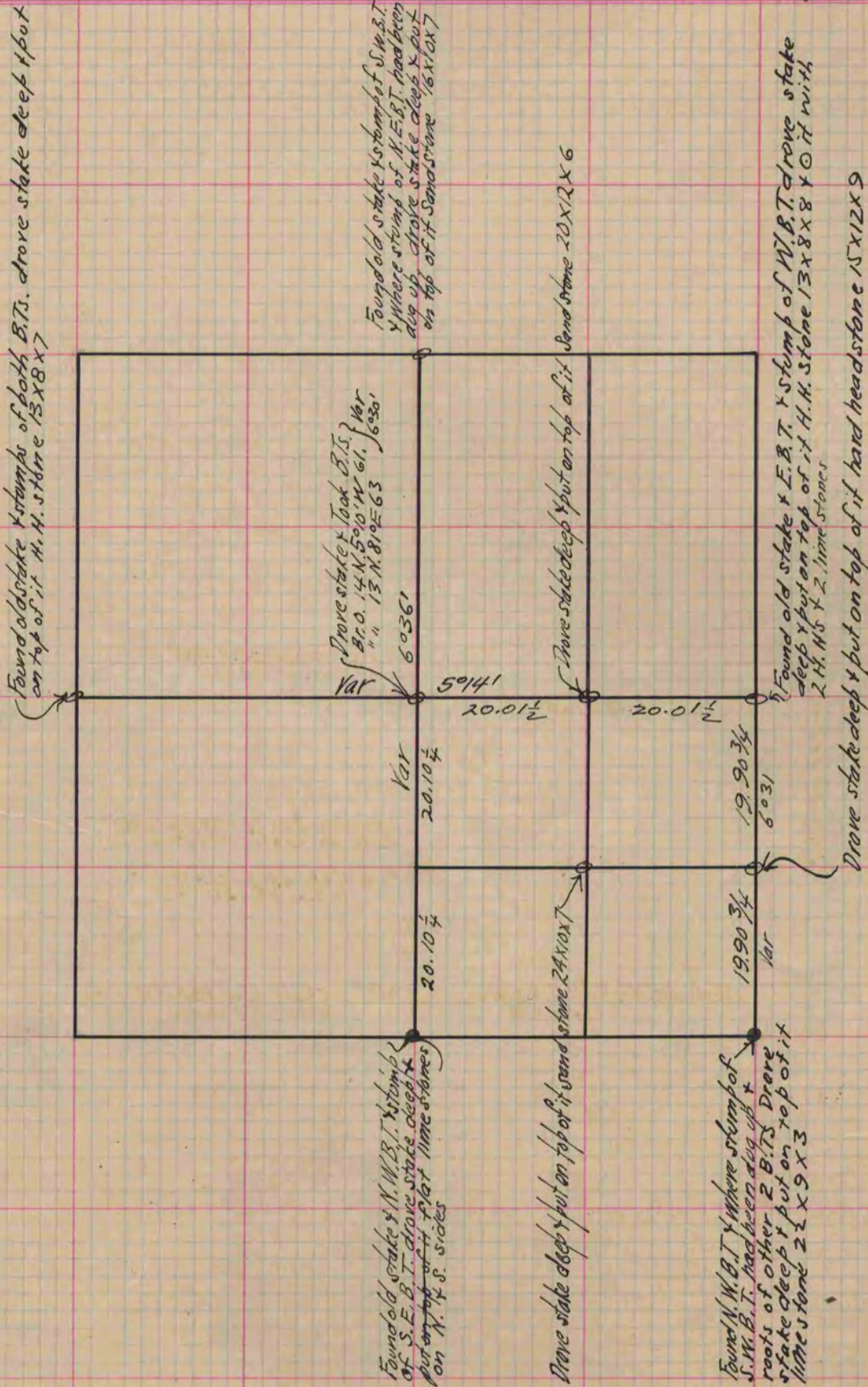
Rock County, Wisconsin, made May the 22 + 23 1871

I hereby certify that the following is a correct record of said survey as made by me.

COUNTY BUILDING
CITY OF JANESVILLE

(Signed) Edward Ruger
R.H.B.

County Surveyor.



Copied from Page 40 Vol. 2 Original County Surveyors Record