

PLAT AND RECORD

Of a Survey on Section 17 T A R 11 E. of the 4 P. M. in Porter Township

Rock County, Wisconsin, made Aug. the 15 1895

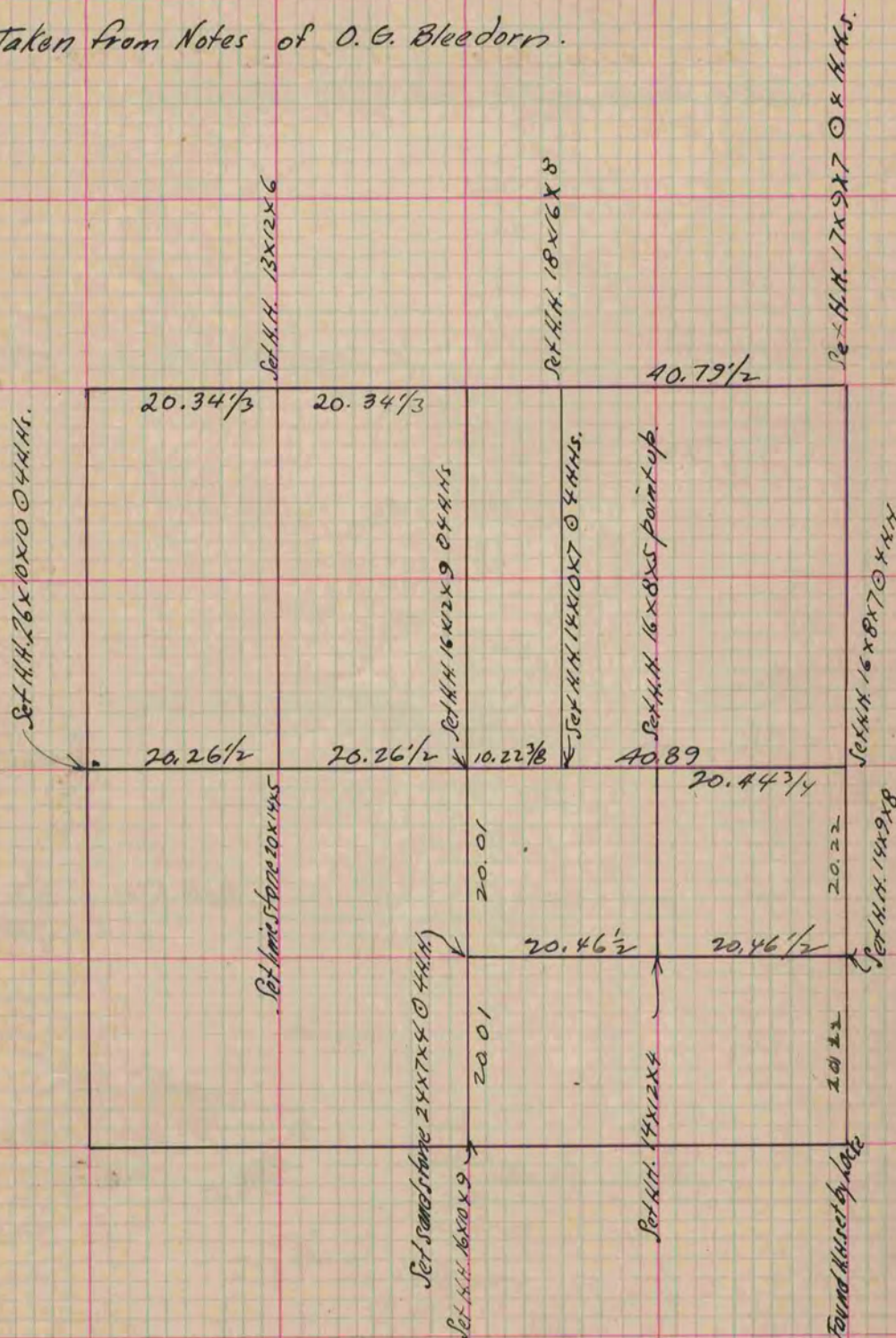
I hereby certify that the following is a correct record of said survey as made by me.

COUNTY BUILDING
CITY OF JANESVILLE

(Signed) P. F. Brown
R. H. B.

County Surveyor.

Taken from Notes of O. G. Bleedorn.



Copied from P. 381. Vol. 2. County Surveyors Record