

# PLAT AND RECORD

COUNTY BUILDING  
CITY OF JANESVILLE

VOL. 5

Of a Survey on Section **19** T **3** R **10** E. of the 4 P. M. in **MAGNOLIA** Township

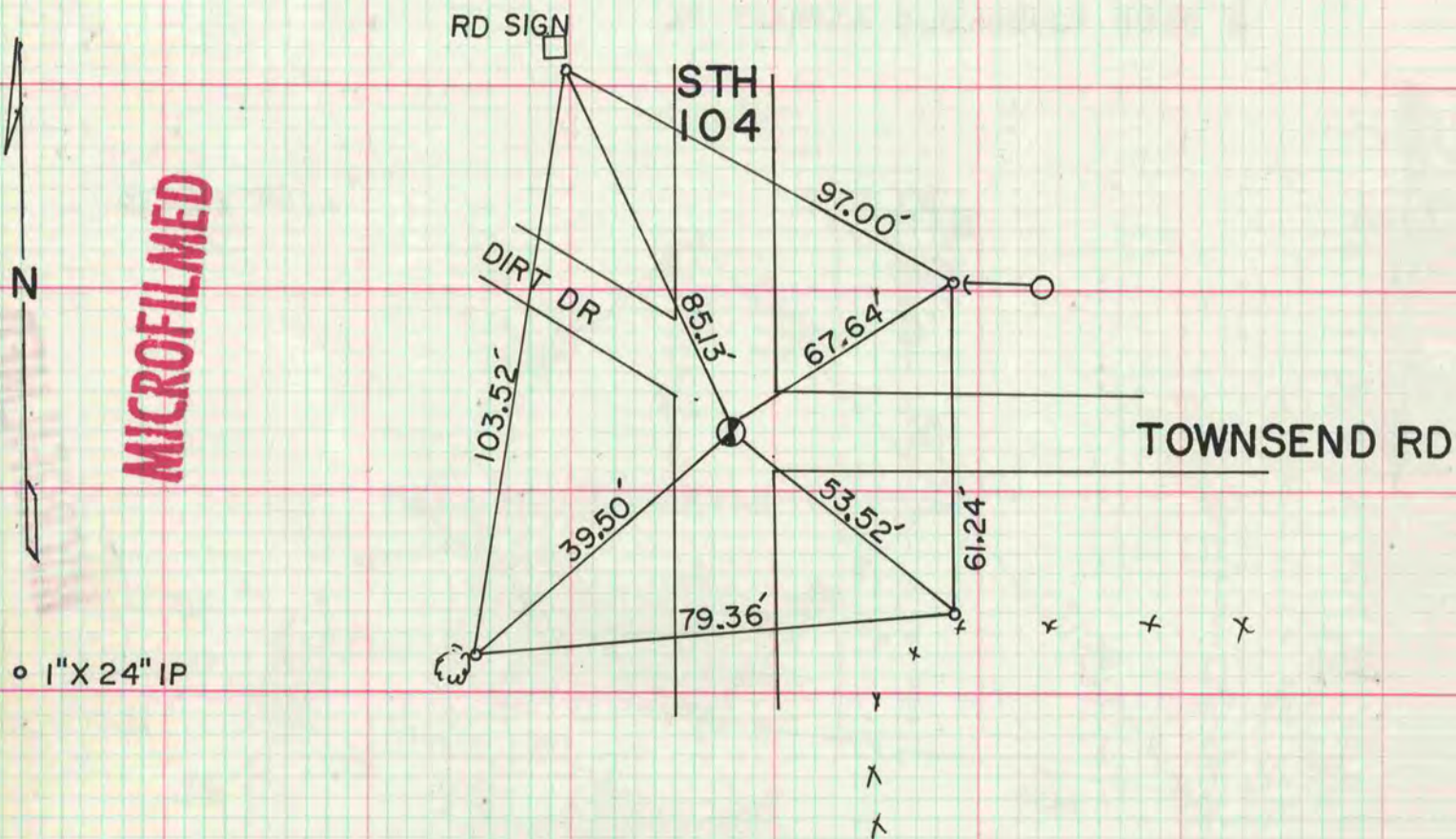
Rock County, Wisconsin, made **MAY** the **10** 19**78**

I hereby certify that the following is a correct record of said survey as made by me.



## SW CORNER OF SEC 19

FORMER COUNTY SUEVOR DUG & FOUND NOTHING, VOL 3 PAGE 353.  
SET ON LINE WITH THE SE & E1/4 CORNER OF SEC 25 R9T3N  
AT CENTER LINE OF TOWNSEND ROAD AS CALLED FOR IN THE  
RD RECORDS. SET ALUM MON.



1" X 24" IP

## SE CORNER OF SEC 19

FOUND PK. DUG & FOUND NOTHING. TERRAIN & SOILS UNDER  
ROAD INDICATE CORNER WAS PROBABLY DESTROYED BY RD  
CONSTRUCTION ~~PK IS IN HARMONY WITH OCCUPATION &~~  
~~TOWNSEND ROAD RECORDS. ACCEPTED PK AS CORNER SET~~  
~~ALUM MON~~ SET ON LINE WITH THE E1/4 & E1/16 OF THE SE 1/4  
CORNERS OF SEC 19 AT SINGLE PROPORTIONATE DISTANCE

