

PLAT AND RECORD

COUNTY BUILDING
CITY OF JANESVILLE

VOL. 5

Of a Survey on Section 19 T 3 R 10 E. of the 4 P. M. in MAGNOLIA Township

Rock County, Wisconsin, made SEPTEMBER the 2 1975

I hereby certify that the following is a correct record of said survey as made by me.

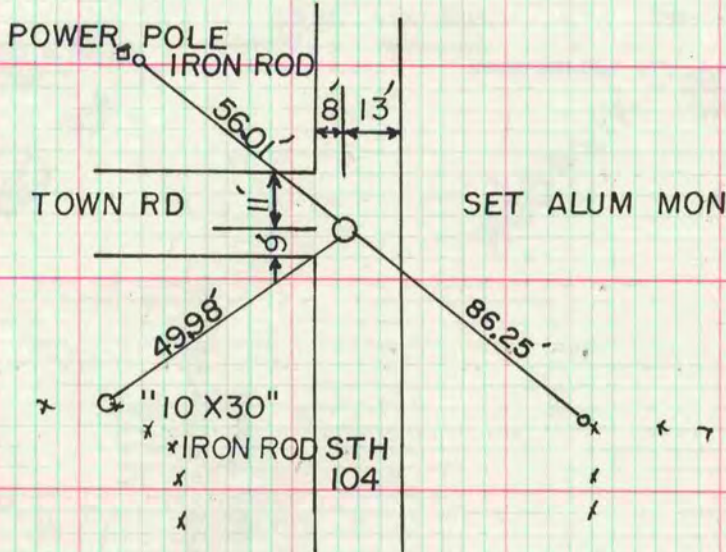
Donald Barnes
County Surveyor.



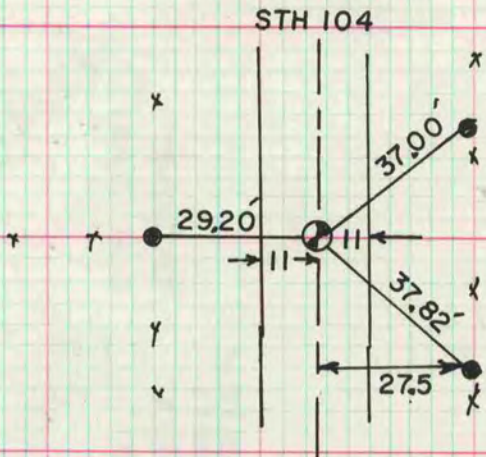
INFORMATION RECEIVED FROM DICK TALARCZYK

MICROFILMED

E 1/4 COR SEC 25 T3N R9E



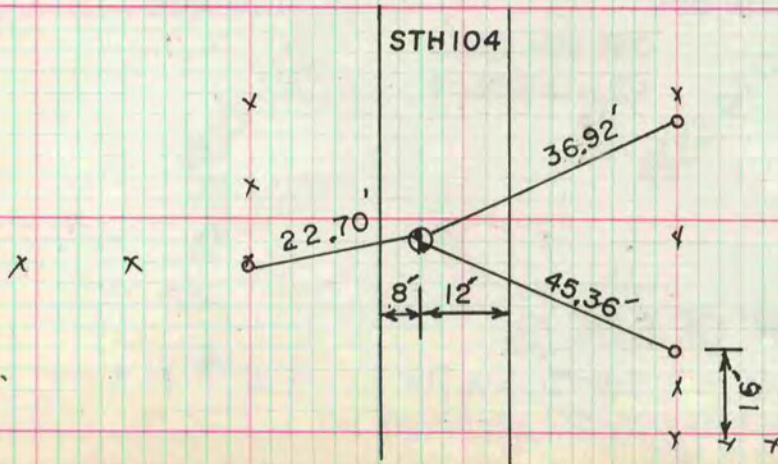
SE COR SEC 25 T3NR9E



CORNER SET IN PLACE OF STONE FOUND

- #10 IRON ROD
- ⊙ ALUM MON

NE COR SEC 25 T3NR9E



CORNER SET IN PLACE OF STONE FOUND

- 10" 30" IRON ROD
- ⊙ ALUM MON

GREEN COUNTY