

# PLAT AND RECORD

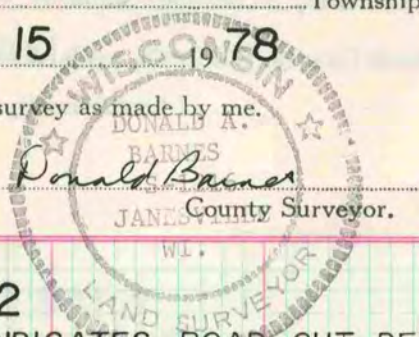
COUNTY BUILDING  
CITY OF JANESVILLE

PLYMOUTH

Of a Survey on Section 32, 31 T 2 R 11 E. of the 4 P. M. in Township

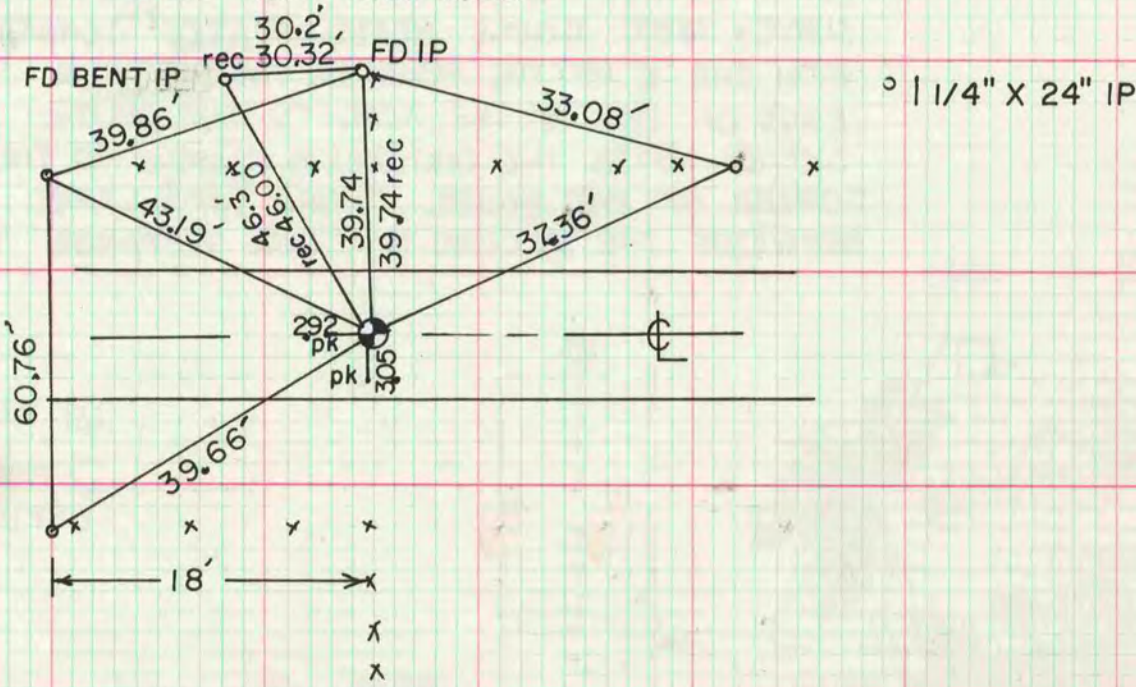
Rock County, Wisconsin, made MAY 15 1978

I hereby certify that the following is a correct record of said survey as made by me.



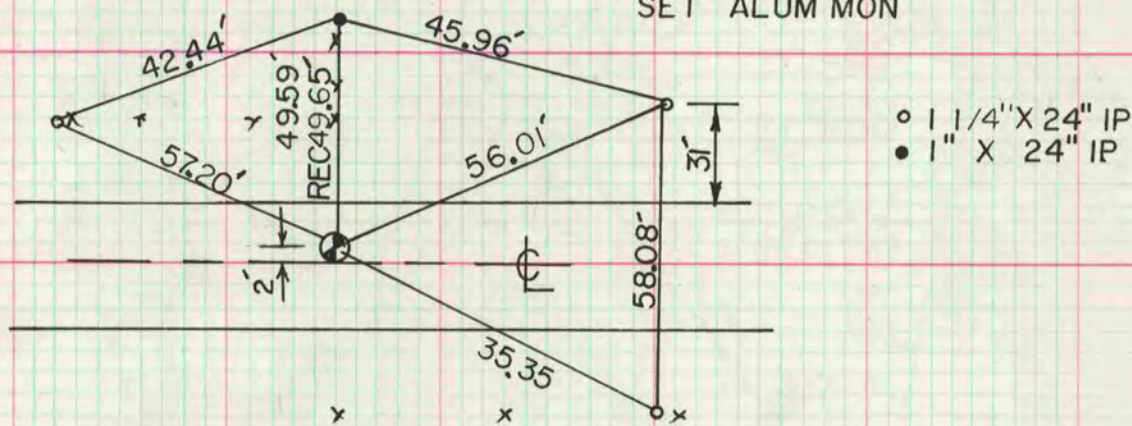
## NW COR OF SEC 32

FOUND RR SPIKE, TERRAIN INDICATES ROAD CUT DESTROYED  
MON. SET ALUM MON.



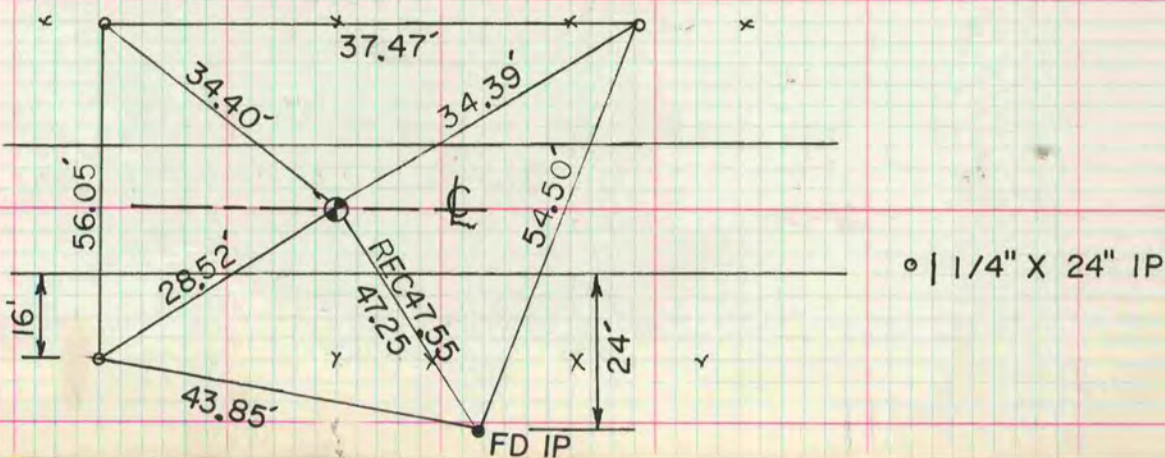
## N 1/4 COR OF SEC 31

FOUND 1/2" X 22" IP & 2' DEEP FOUND CUT LIMESTONE  
SET ALUM MON



## N 1/4 COR OF SEC 32

FOUND PK. H. LEE STATED HE SET PK FROM TIES FOR CSM  
VOL 5 PAGE 16. SET ALUM MON



MICROFILMED