

**MICROFILMED**

# PLAT AND RECORD

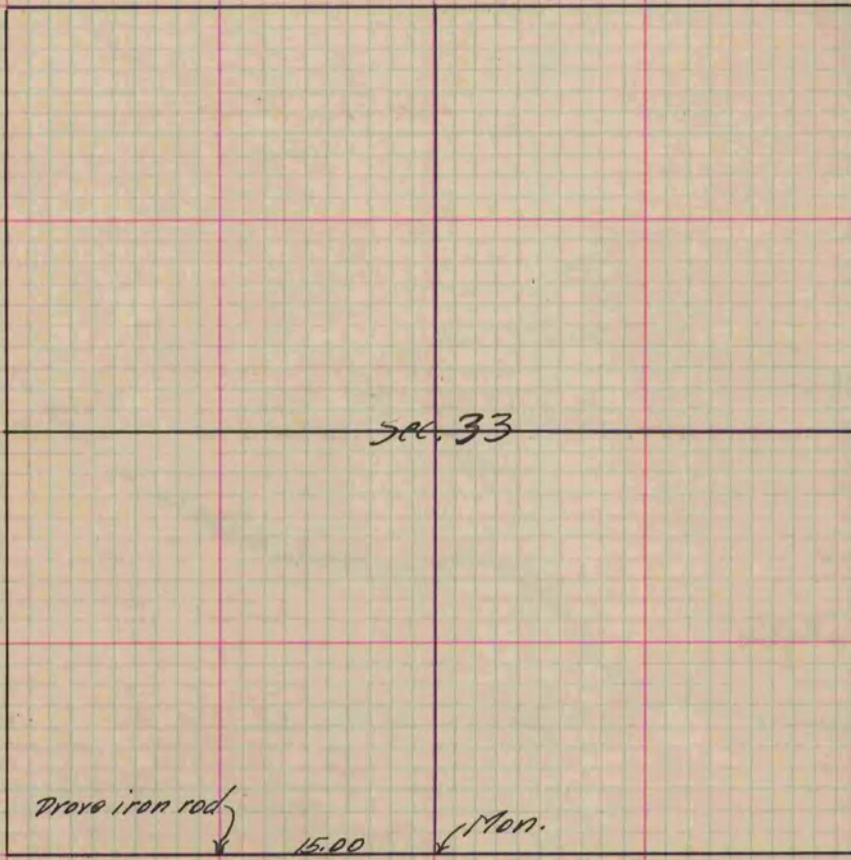
457  
V-2

COUNTY BUILDING  
CITY OF JANESVILLE

Of a Survey on Section 33 T 4 R 10 E. of the 4 P. M. in Union Township  
Rock County, Wisconsin, made Oct the 22 1891

I hereby certify that the following is a correct record of said survey as made by me.

(Signed) O. G. Bleedorn  
Dep. R.H.S. County Surveyor.



*Copied from P. 362 Vol. 2 County Surveyor's Record.*