

PLAT AND RECORD

MICROFILMED

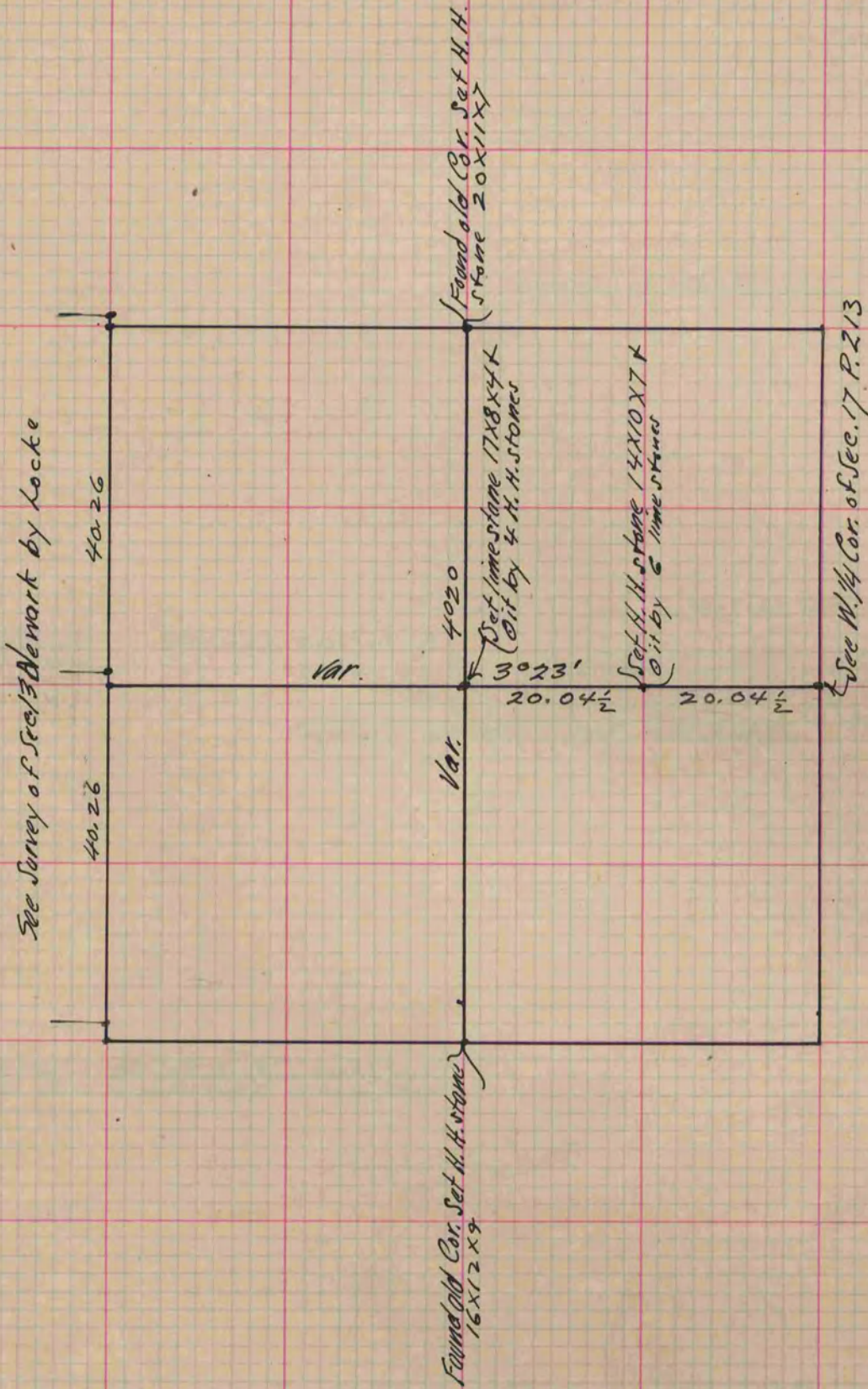
Of a Survey on Section 18 T 1 R 12 E. of the 4 P. M. in Beloit Township

Rock County, Wisconsin, made June the 20 1878

I hereby certify that the following is a correct record of said survey as made by me.

COUNTY BUILDING
CITY OF JANESVILLE

(Signed) Edward Ruger
R.H.B. County Surveyor.



Copied from Page 214 Vol. 2. County Surveyors Record.