

MICROFILMED PLAT AND RECORD

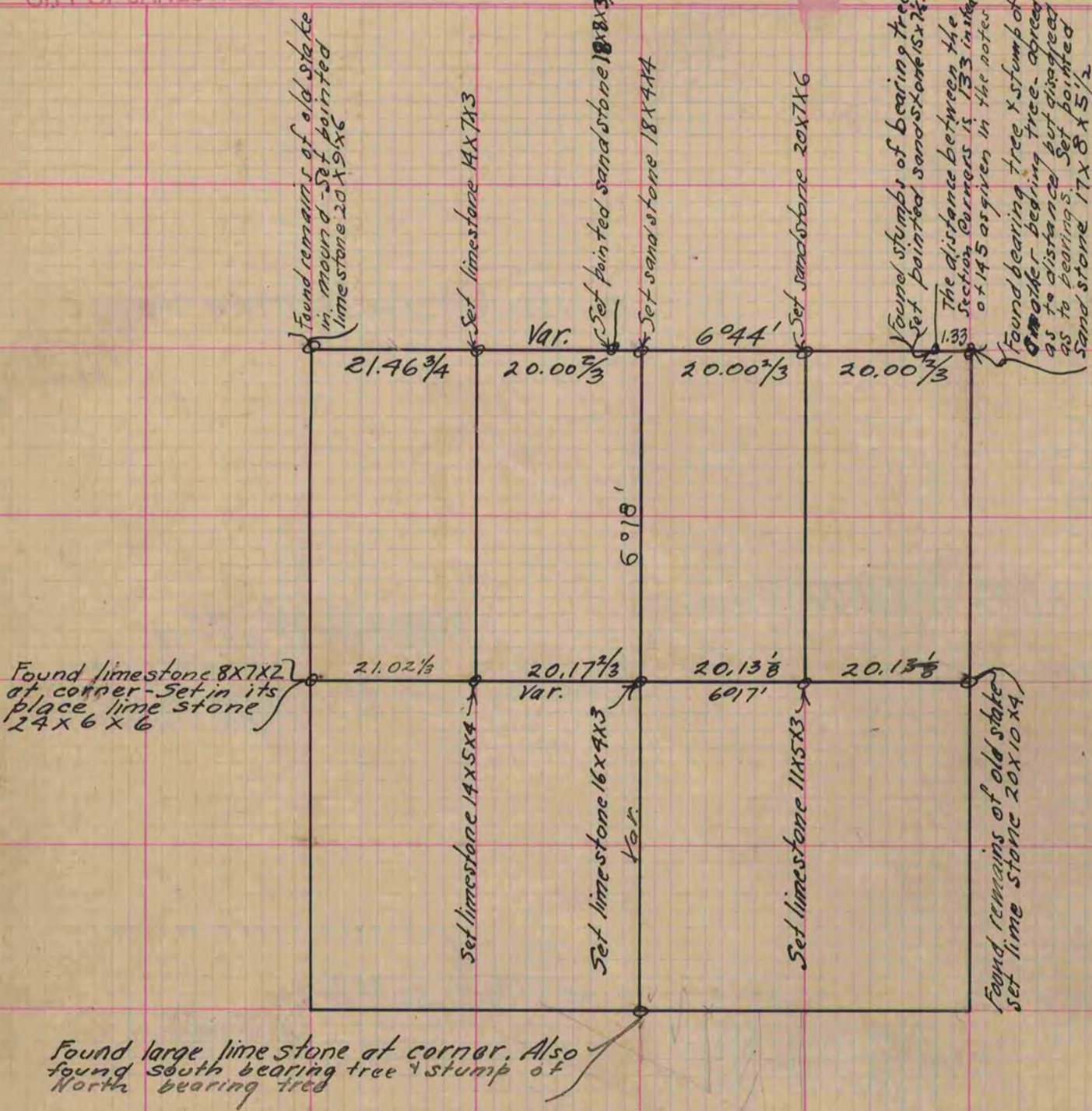
Of a Survey on Section 6 T 1 R 10 E. of the 4 P. M. in Avon Township

Rock County, Wisconsin, made May the 11th + 12th 1870

I hereby certify that the following is a correct record of said survey as made by me.

COUNTY BUILDING
CITY OF JANESVILLE

(Signed) Edward Ruger { Deputy
R.H.B. County Surveyor



Copied from page 20 Vol. 2 Original County Surveyors Record