

MICROFILMED

PLAT AND RECORD

Of a Survey on Section 11 T 3 R 12 E. of the 4 P. M. in Janesville Township

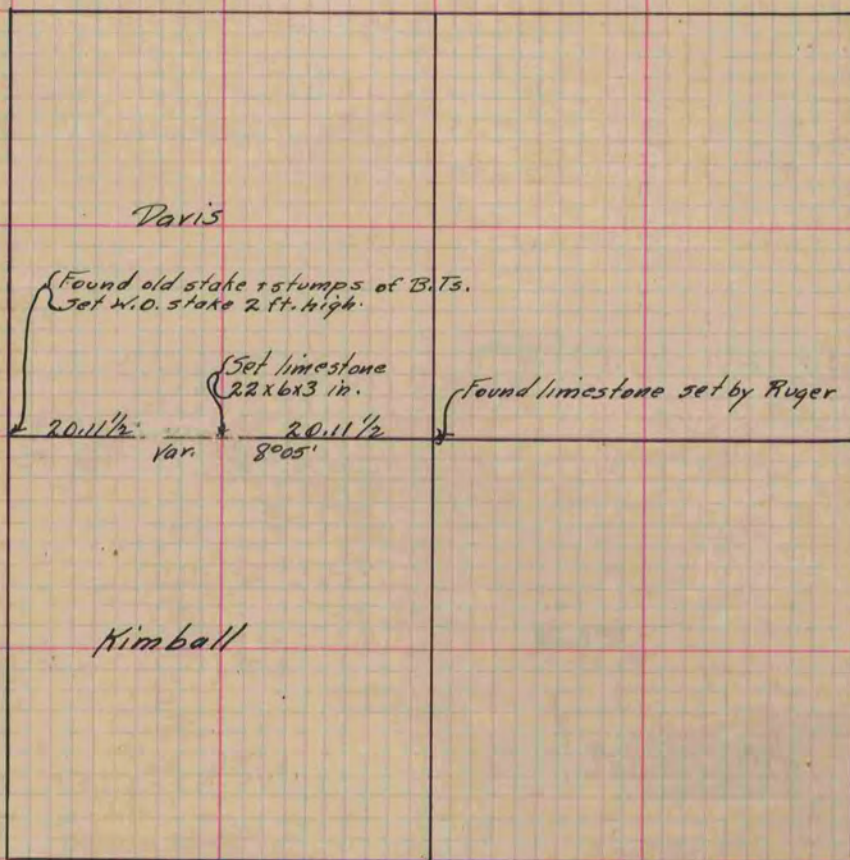
Rock County, Wisconsin, made May the 14 1872

I hereby certify that the following is a correct record of said survey as made by me.

COUNTY BUILDING
CITY OF JANESVILLE

(Signed) R. K. Lee
R. H. B.

County Surveyor.



Copied from Page 51 Vol. 2 Original County Surveyor's Record.