

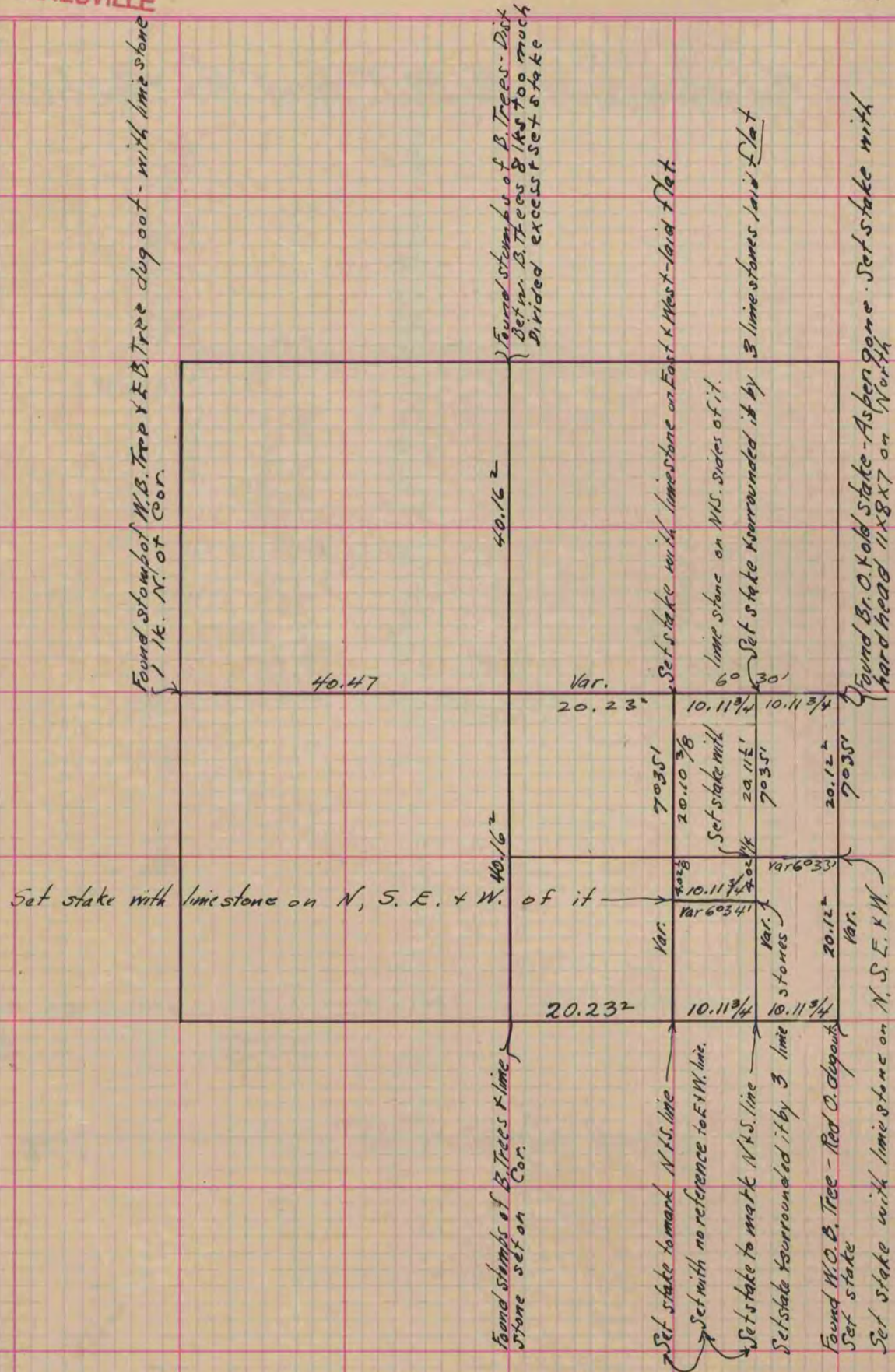
# MICROFILMED PLAT AND RECORD

Of a Survey on Section 26 T 2 R 11 E. of the 4 P. M. in Plymouth Township  
Rock County, Wisconsin, made December 8 and the 9<sup>th</sup> 1865

I hereby certify that the following is a correct record of said survey as made by me.

COUNTY BUILDING  
CITY OF JANESVILLE

(Signed) S. D. Locke  
R.H.B. County Surveyor.



Copied from Page 226 Vol. 1. Original County Surveyors Record.