

V-1 MICROFILMED

# PLAT AND RECORD

Of a Survey on Section 15 T 2 R 12 E. of the 4 P. M. in Rock Township

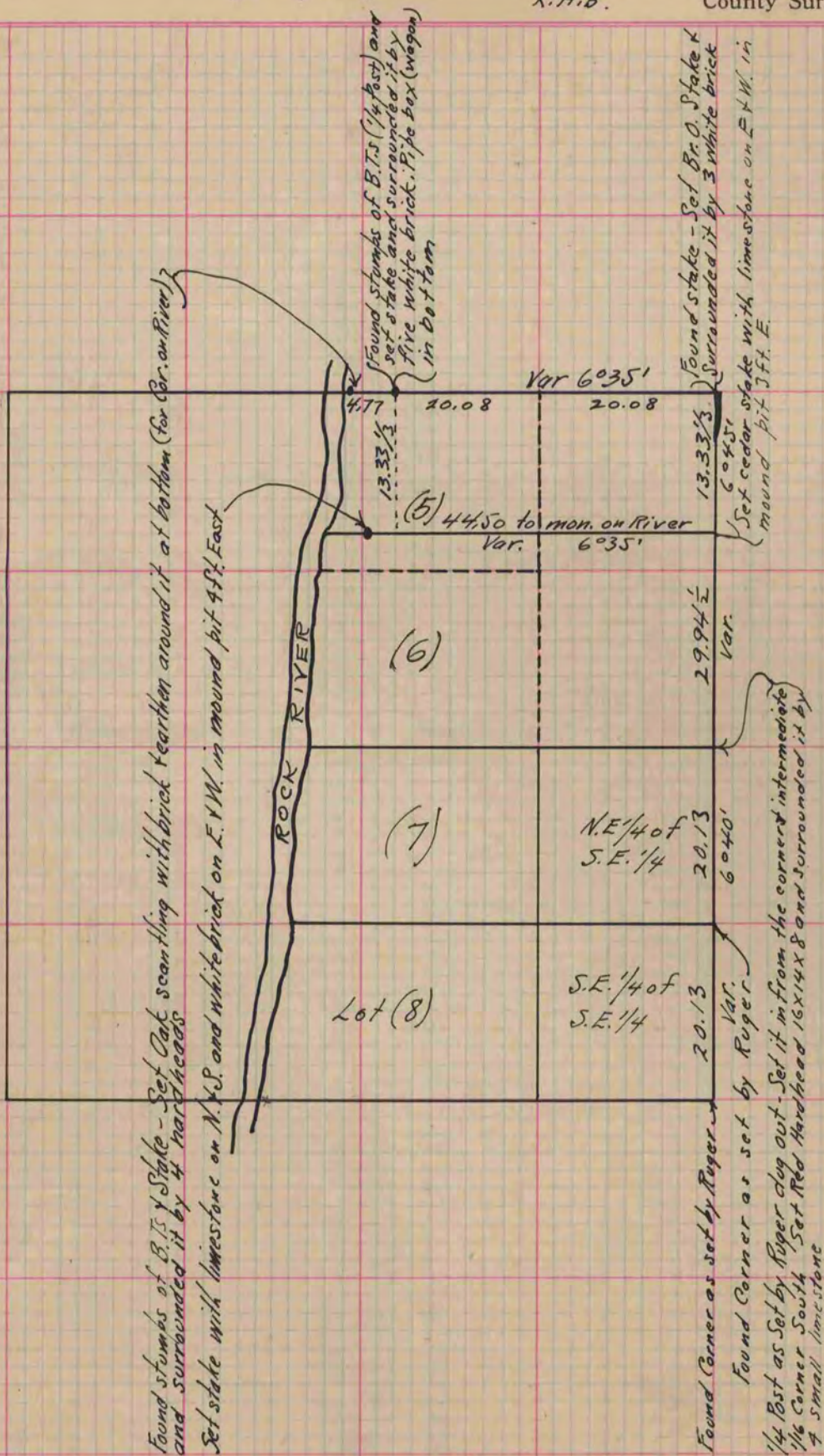
Rock County, Wisconsin, made April the 26 1867

I hereby certify that the following is a correct record of said survey as made by me.

COUNTY BUILDING  
CITY OF JANESVILLE

(Signed) S. D. Locke  
R.H.B.

County Surveyor.



Copied from Page 246 Vol. 1. Original County Surveyors Record