

V-2
MICROFILMED

PLAT AND RECORD

Of a Survey on Section $N\frac{1}{4} 3$ T 3 R 12 E. of the 4 P. M. in *Janesville* Township

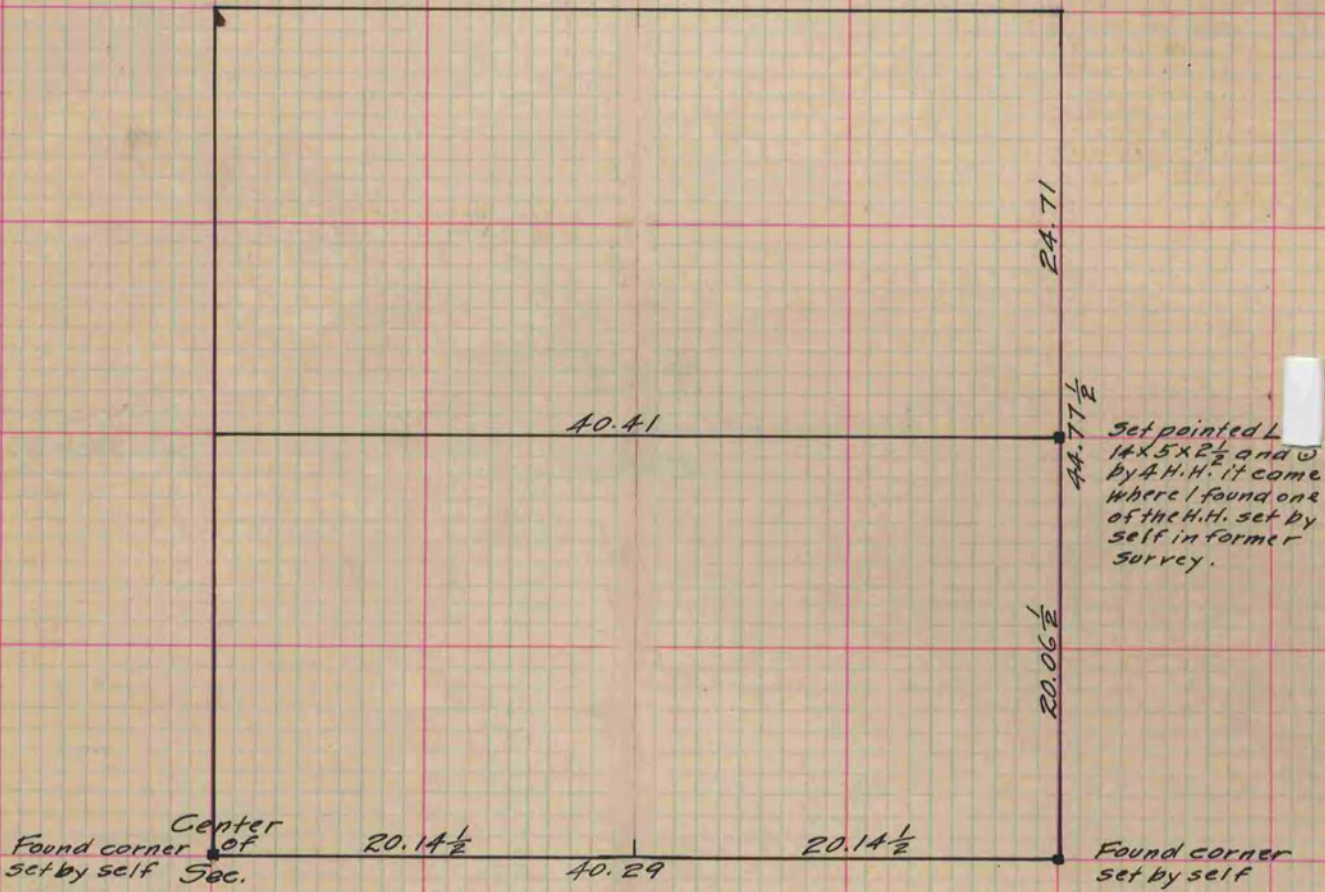
Rock County, Wisconsin, made *Dec.* the *11. and 12* 1886

I hereby certify that the following is a correct record of said survey as made by me.

COUNTY BUILDING
CITY OF JANESVILLE

(Signed) *Edward Ruger*

County Surveyor.



See page 194

Copied from P. 337 Vol. 2 County Surveyors Record.