

V-2 MICROFILMED PLAT AND RECORD

Of a Survey on Section 31 T 3 R 13 E. of the 4 P. M. in Harmony Township

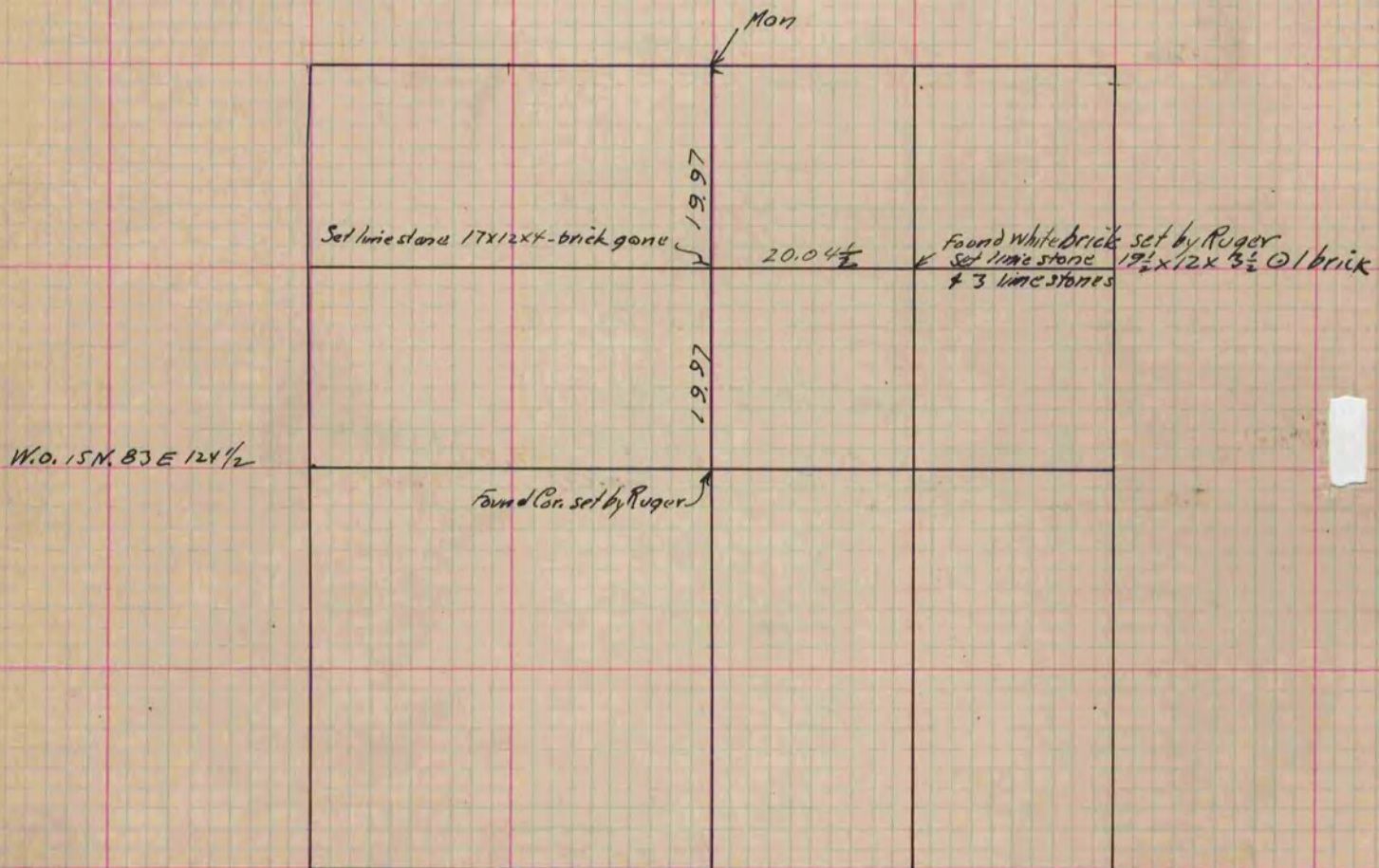
Rock County, Wisconsin, made Oct. the 15 1892

I hereby certify that the following is a correct record of said survey as made by me.

COUNTY BUILDING
CITY OF JANESVILLE

(Signed) O. G. Bleedorn
RHB

County Surveyor.



Copied from P. 370 Vol. 2 County Surveyors Record.