

MICROFILMED

PLAT AND RECORD

Of a Survey on Section 11 T 4 R 14 E. of the 4 P. M. in Lima Township

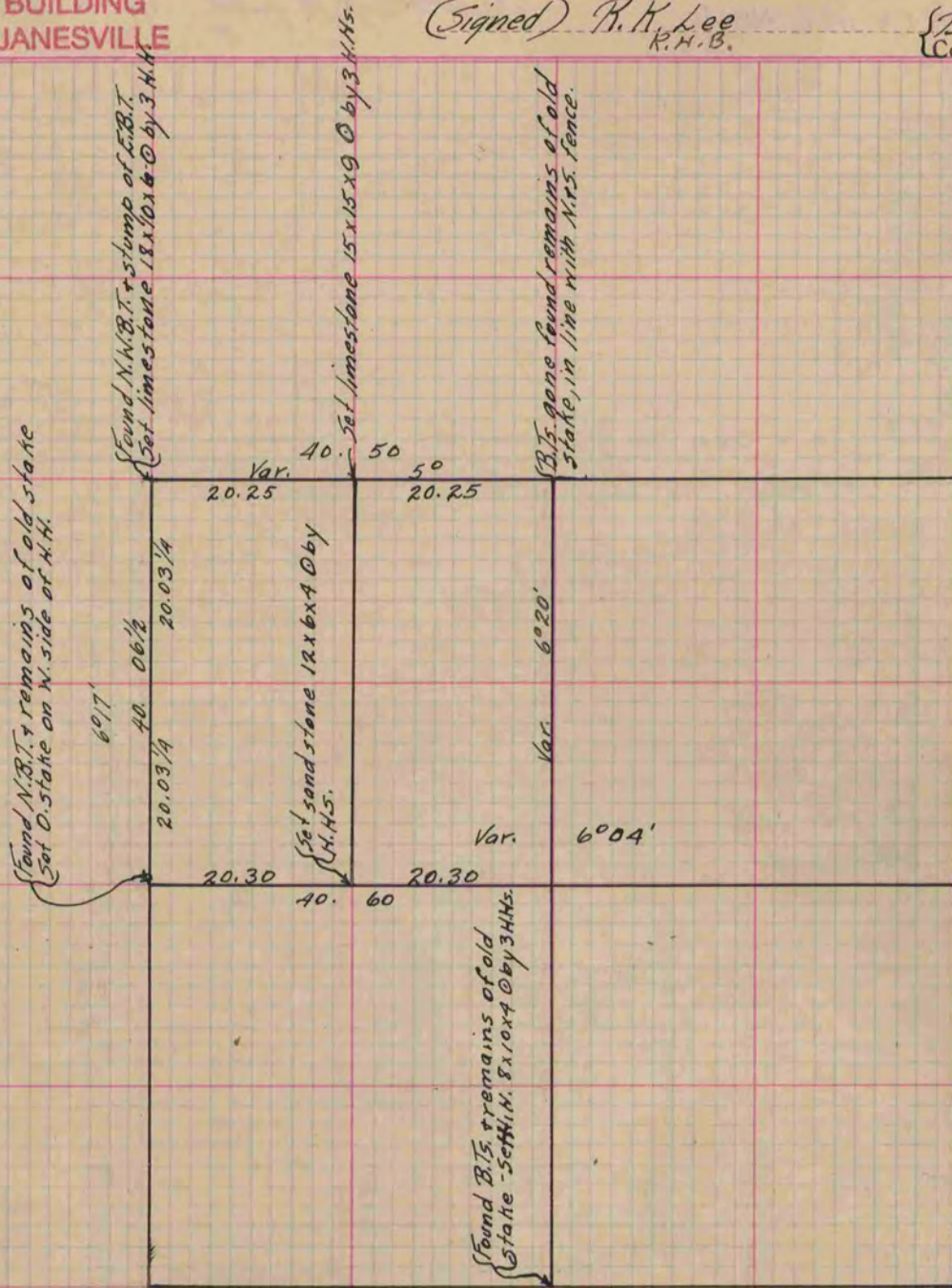
Rock County, Wisconsin, made April the 25th & 26th 1872

I hereby certify that the following is a correct record of said survey as made by me.

COUNTY BUILDING
CITY OF JANESVILLE

(Signed) R. K. Lee
R.H.B.

Deputy
County Surveyor.



Copied from Page 57 Vol. 2 Original County Surveyor's Record.