

V-2
MICROFILMED

PLAT AND RECORD

Of a Survey on ^{S.E. 1/4} Section 25 T 3 R 14 E. of the 4 P. M. in Johnstown Township

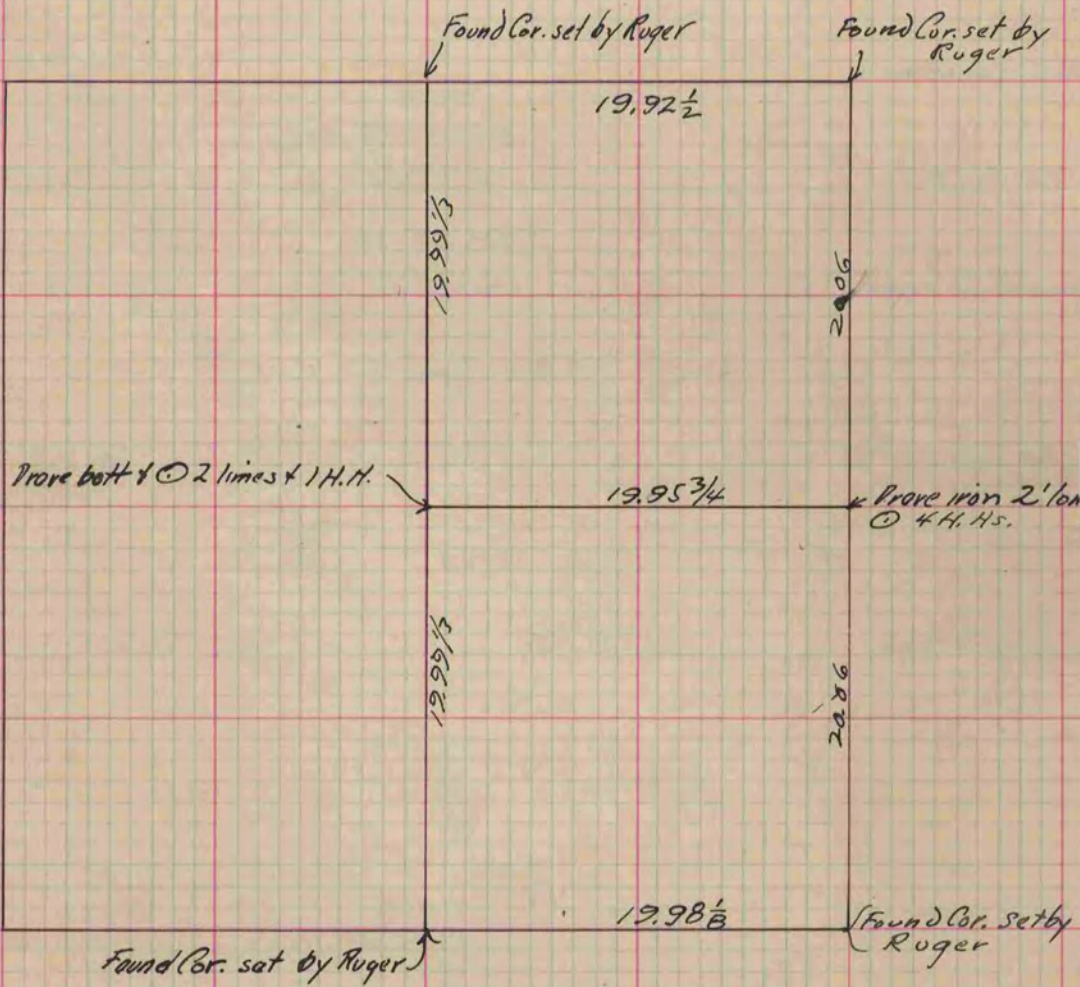
Rock County, Wisconsin, made Sept. the 30 1892

I hereby certify that the following is a correct record of said survey as made by me.

COUNTY BUILDING
CITY OF JANESVILLE

(Signed) O.G. Bleedorn
R. H. B.

County Surveyor.



Copied from P. 369 Vol. 2. County Surveyors Record.