

MICROFILMED PLAT AND RECORD VI

Of a Survey on Section 14 T 1 R 13 E. of the 4 P. M. in Turtle Township
Rock County, Wisconsin, made June the 1st 1854

I hereby certify that the following is a correct record of said survey as made by me.

COUNTY BUILDING
CITY OF JANESVILLE

(Signed) Peter McKean
R.H.B. County Surveyor.

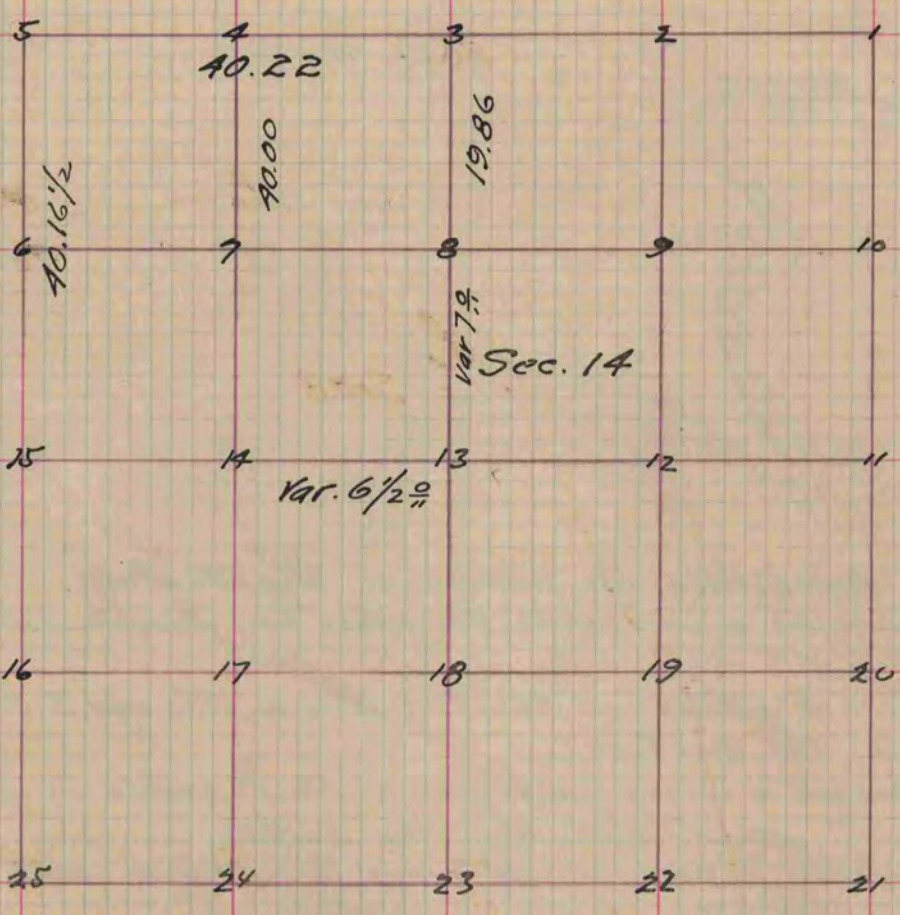


Figure 4 Represents the N.E. corner of the N.W. quarter
of the N.W. Qr Section

Fig. 4 W.O. 28 N. 74 1/4 W. 62 Also W.O. 8 S. 8 1/2 E. 46

Copied from Page 26 Vol. 1. Original County Surveyors Record