

52 MICROFILMED PLAT AND RECORD  
✓I

Of a Survey on Section 15 T 1 R 14 E. of the 4 P. M. in Clinton Township  
Rock County, Wisconsin, made September the 21<sup>st</sup> 1855

I hereby certify that the following is a correct record of said survey as made by me.

COUNTY BUILDING  
CITY OF JANESVILLE

(Signed) Joseph Church  
R.H.B. County Surveyor.

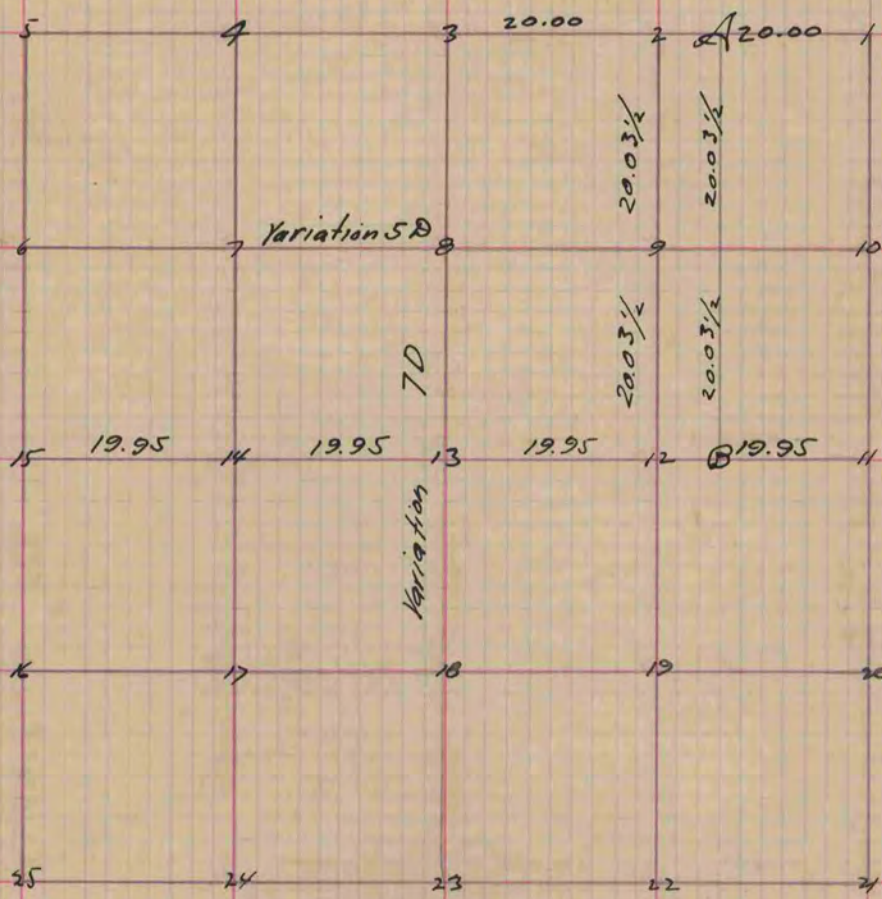


Fig 2- 9-12 + 13 Stakes and Stones  
Letters A + B. Stake and Stones A is 5 chains From Fig 2  
B. is 5 chains From Fig. 12

Copied from Page 53 Vol. 1 Original County Surveyors Record