

MICROFILMED

PLAT AND RECORD

510

V-2

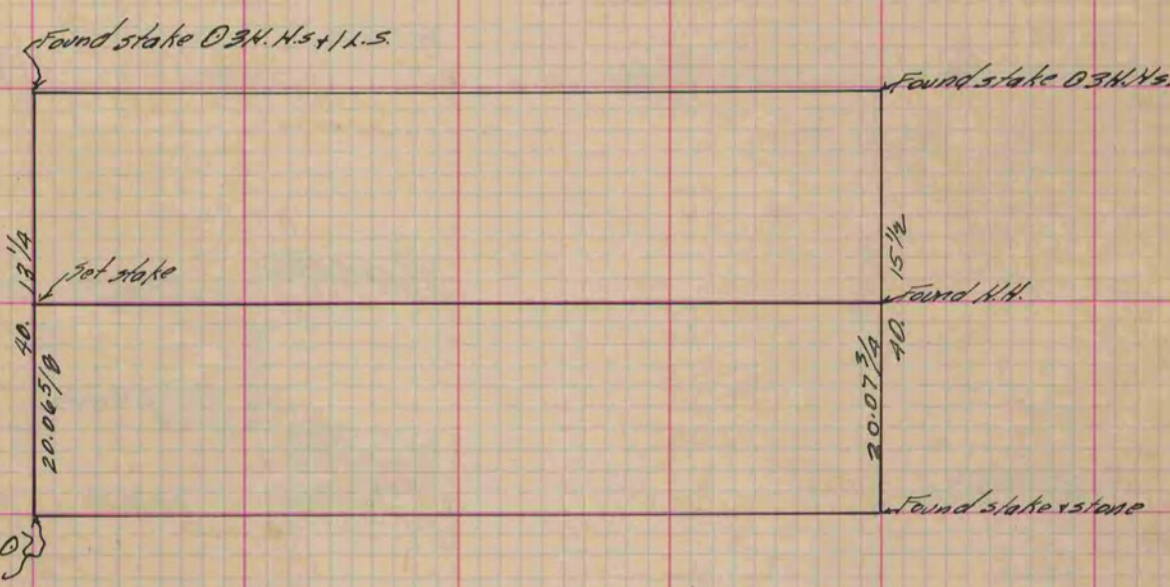
COUNTY BUILDING
CITY OF JANESVILLE

Of a Survey on ^{5/2} Section 21 T 4 R 14 E. of the 4 P. M. in Lima Township

Rock County, Wisconsin, made Oct. the 1 1900

I hereby certify that the following is a correct record of said survey as made by me.

(Signed) P.F. Brown
R. N. B. County Surveyor.



Copied from P. 392 Vol. 12 County Surveyor's Record.