

MICROFILMED PLAT AND RECORD

507
V-2

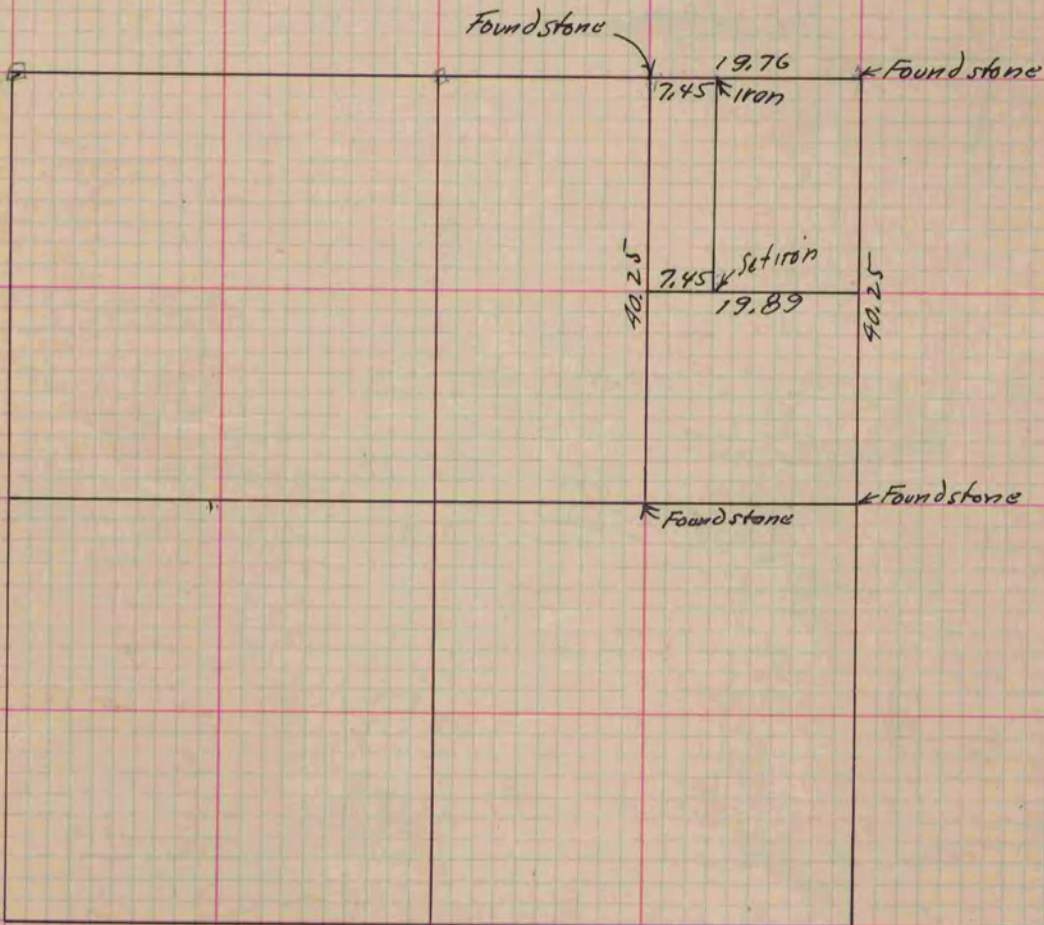
COUNTY BUILDING
CITY OF JANESVILLE

Of a Survey on ^{N.E. 1/4} Section 8 T 4 R 12 E. of the 4 P. M. in Fulton Township

Rock County, Wisconsin, made April the 29 1899

I hereby certify that the following is a correct record of said survey as made by me.

(Signed) Perry F. Brown
R. H. B. County Surveyor.



Copied from P. 385 Vol. 2. County Surveyors Record.