

Of a Survey on Section 18 T 3 R 11 E. of the 4 P. M. in CENTER AVON Township
 Rock County, Wisconsin, made JULY the 12 1977

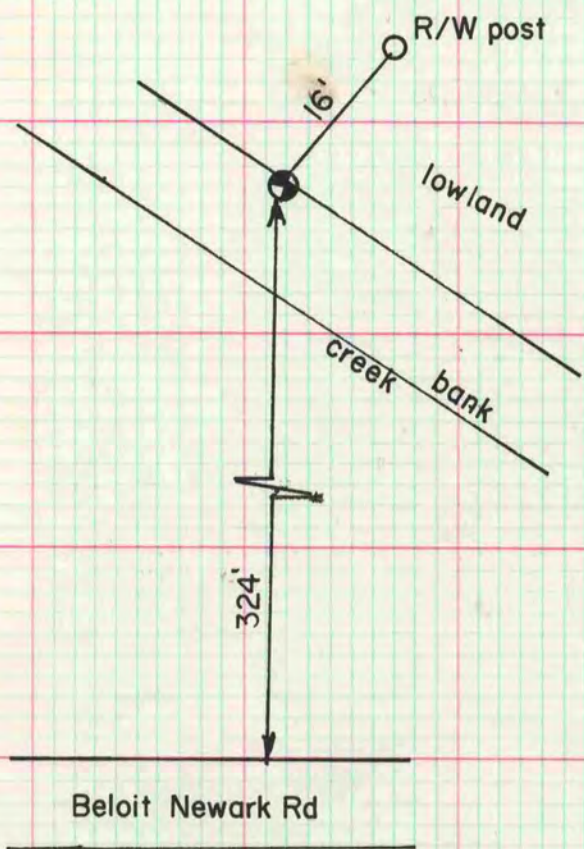
I hereby certify that the following is a correct record of said survey as made by me.

COUNTY BUILDING
 CITY OF JANESVILLE

Donald Barnes



County Surveyor.



SE cor sec 18-1-10
 set at double proportionate measurement
 with the NE and S1/4 cors of sec 18, the
 S1/4 cor sec 17 and the E1/4 sec 19.
 set alum mon

MICROFILMED

