

MICROFILMED

PLAT AND RECORD

335
V-1

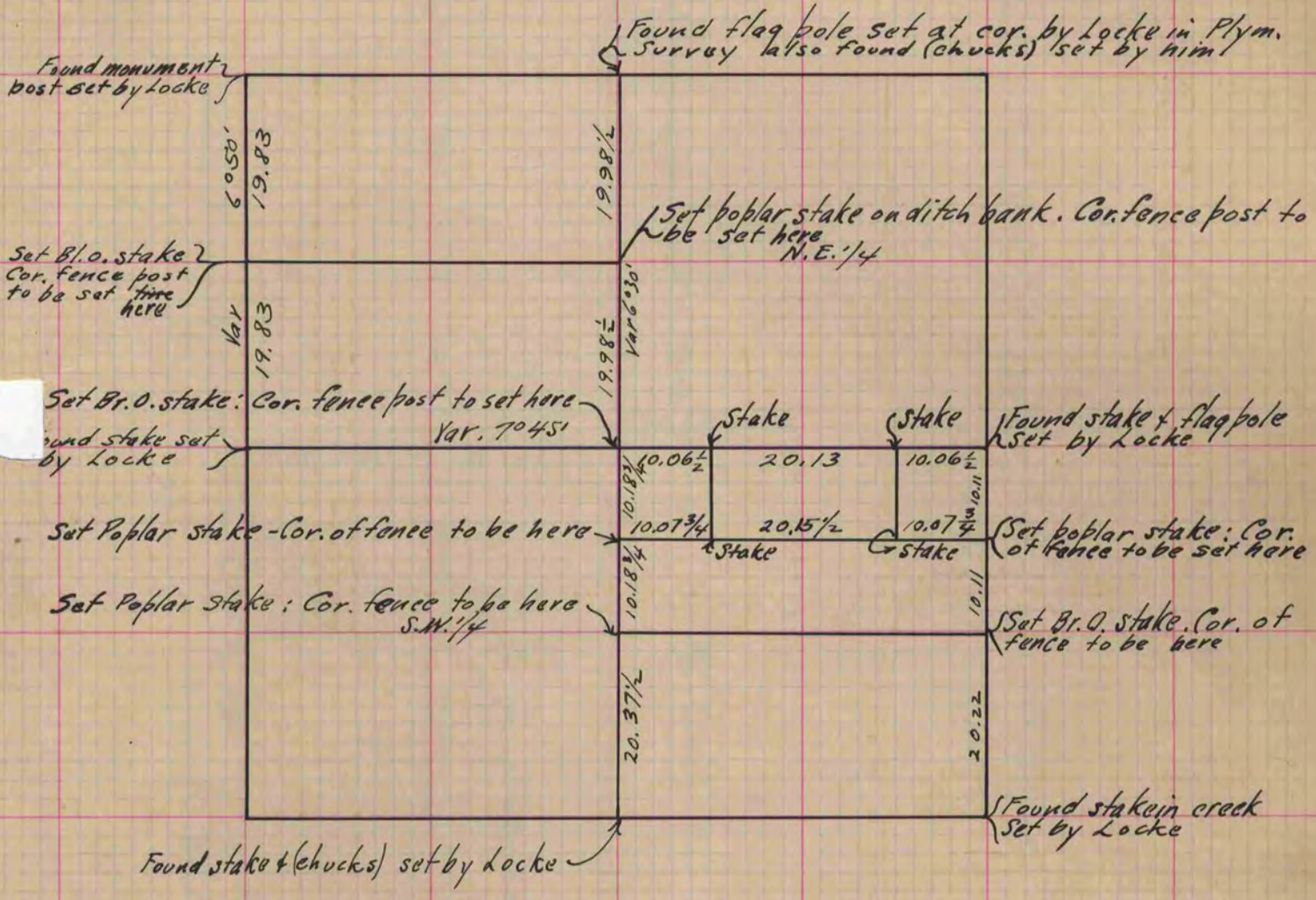
COUNTY BUILD.
CITY OF JANESVILLE

Of a Survey on Section 18 T 2 R 11 E. of the 4 P. M. in Plymouth Township

Rock County, Wisconsin, made November the 17, 18 + 19th 1868

I hereby certify that the following is a correct record of said survey as made by me.

(Signed) R. K. Lee
R.H.B. Deputy County Surveyor.



Copied from Page 275 Vol. 1. Original County Surveyors Record