

MICROFILMED

PLAT AND RECORD

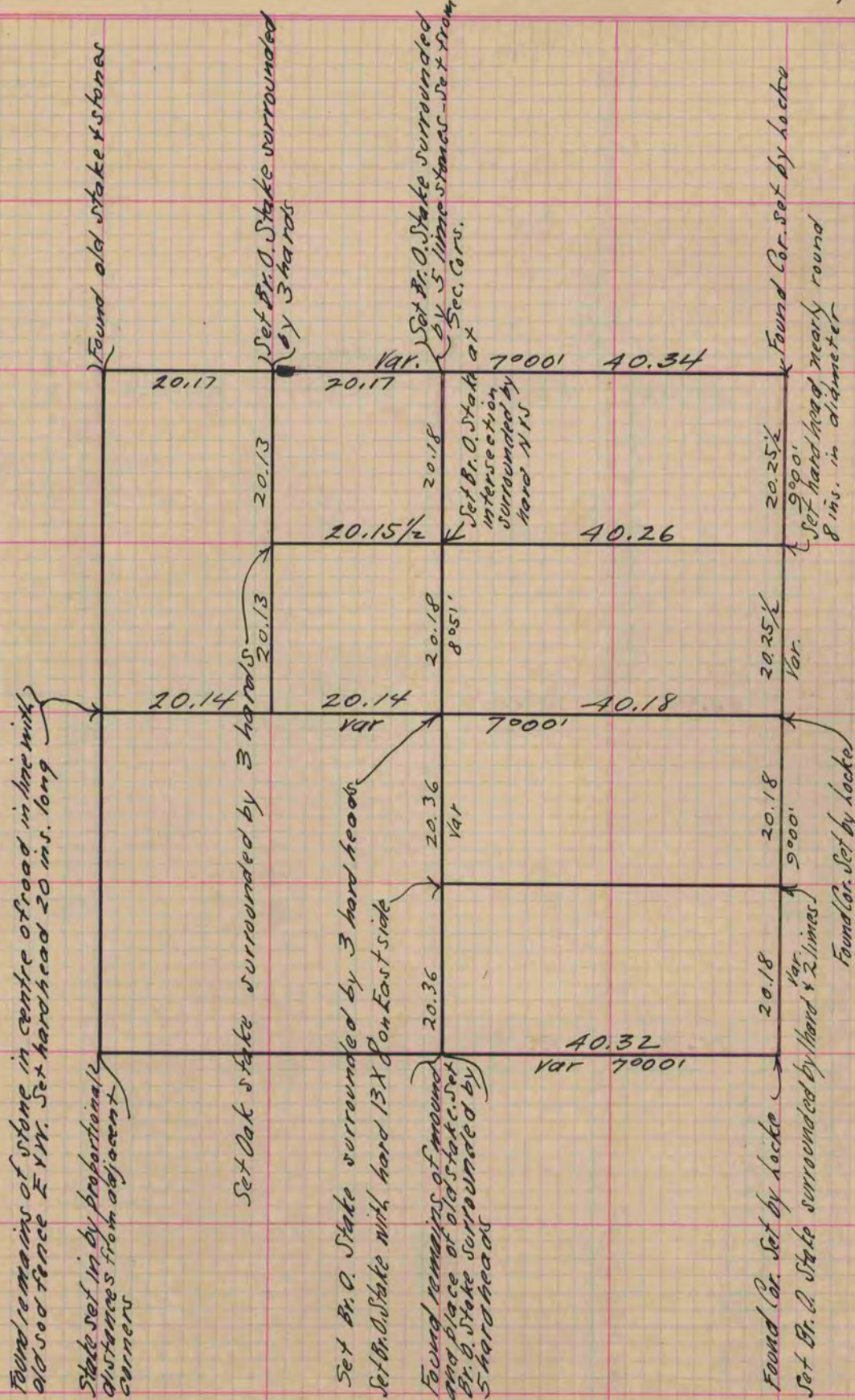
353
V-1

COUNTY BUILDING
CITY OF JANESVILLE

Of a Survey on Section 27 T 3 R 10 E. of the 4 P. M. in Magnolia Township
Rock County, Wisconsin, made July the 6th & 7th 1869

I hereby certify that the following is a correct record of said survey as made by me.

(Signed) R. K. Lee
R.H.B. Dep. County Surveyor.



Copied from Page 284 Vol. 1. Original County Surveyors Record