

PLAT AND RECORD

197
V-1

MICROFILMED

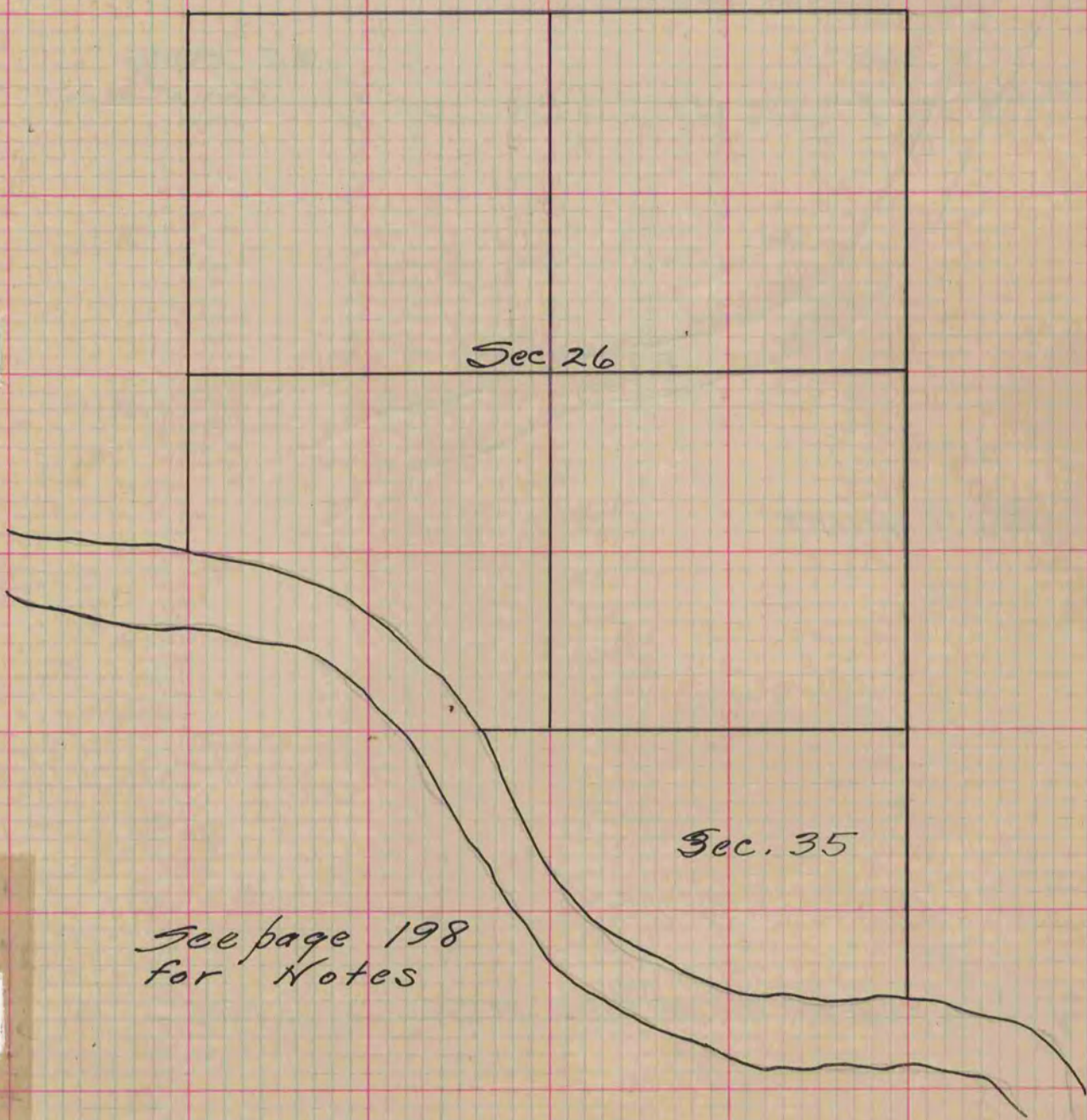
COUNTY BUILDING
CITY OF JANESVILLE

Of a Survey on Sections *26 + 35* T *2* R *12* E. of the 4 P. M. in *Rock* Township

Rock County, Wisconsin, made *January* the *18 + 20* 18*64*

I hereby certify that the following is a correct record of said survey as made by me.

(Signed) *S. D. Locke*
County Surveyor.



*See page 198
for Notes*

Copied from upper 1/2 of Page 199 Vol. One Original County Surveyors Record.