

PLAT AND RECORD

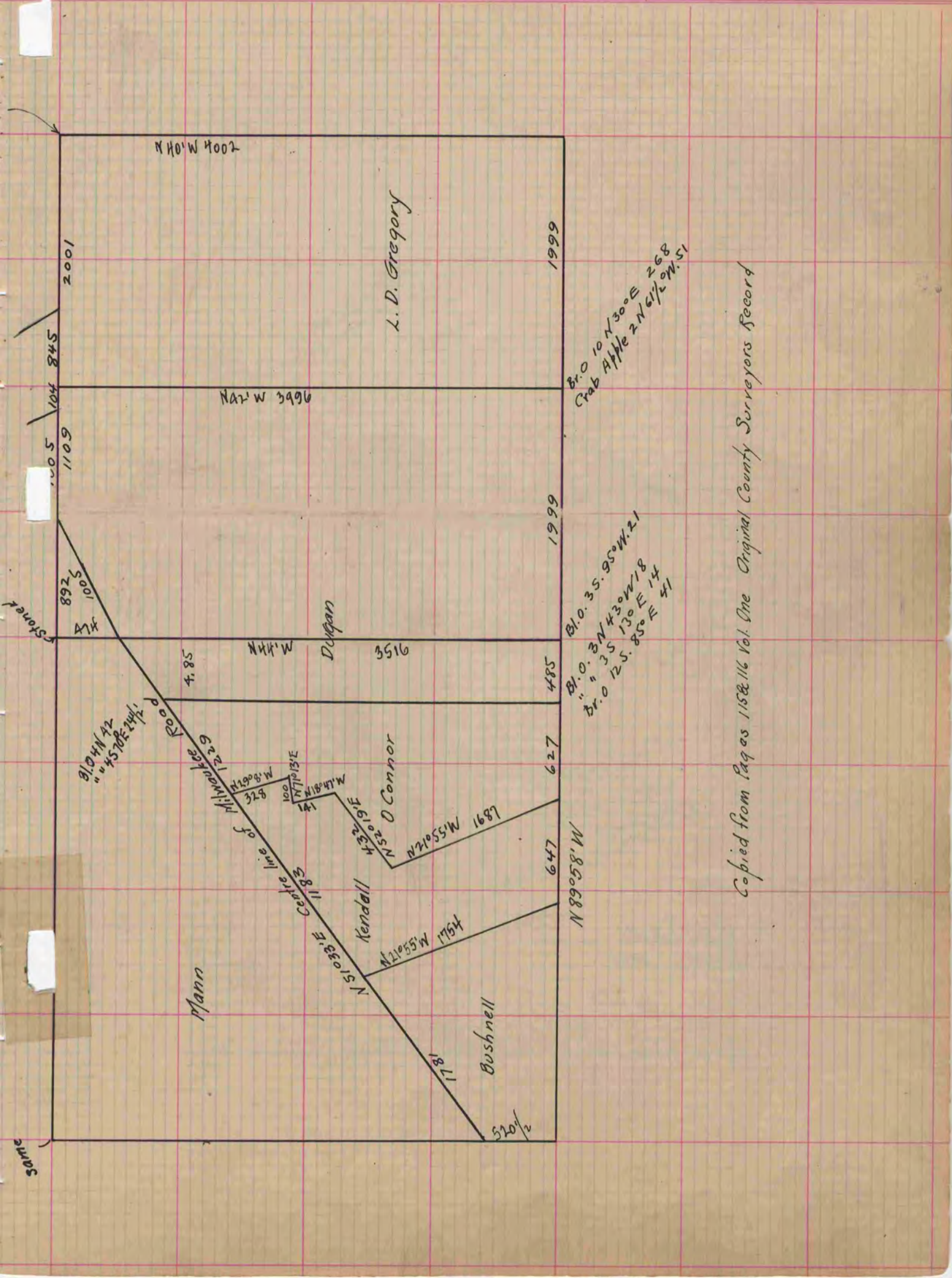
MICROFILMED

COUNTY BUILDING
CITY OF JANESVILLE

Of a Survey on Section 30 T 1 R 13 E. of the 4 P. M. in Turtle Township
Rock County, Wisconsin, made June the 10th 1859

I hereby certify that the following is a correct record of said survey as made by me.

(Signed) E. F. Hobart
R.H.B. Deputy County Surveyor.



Copied from Pages 115 & 116 Vol. One Original County Surveyors Record