

MICROFILMED

PLAT AND RECORD

COUNTY BUILDING
CITY OF JANESVILLE

1
Vol (1)

Of a Survey on Section 4 T 1 R 12 E. of the 4 P. M. in Beloit Township
Rock County, Wisconsin, made March the 1851

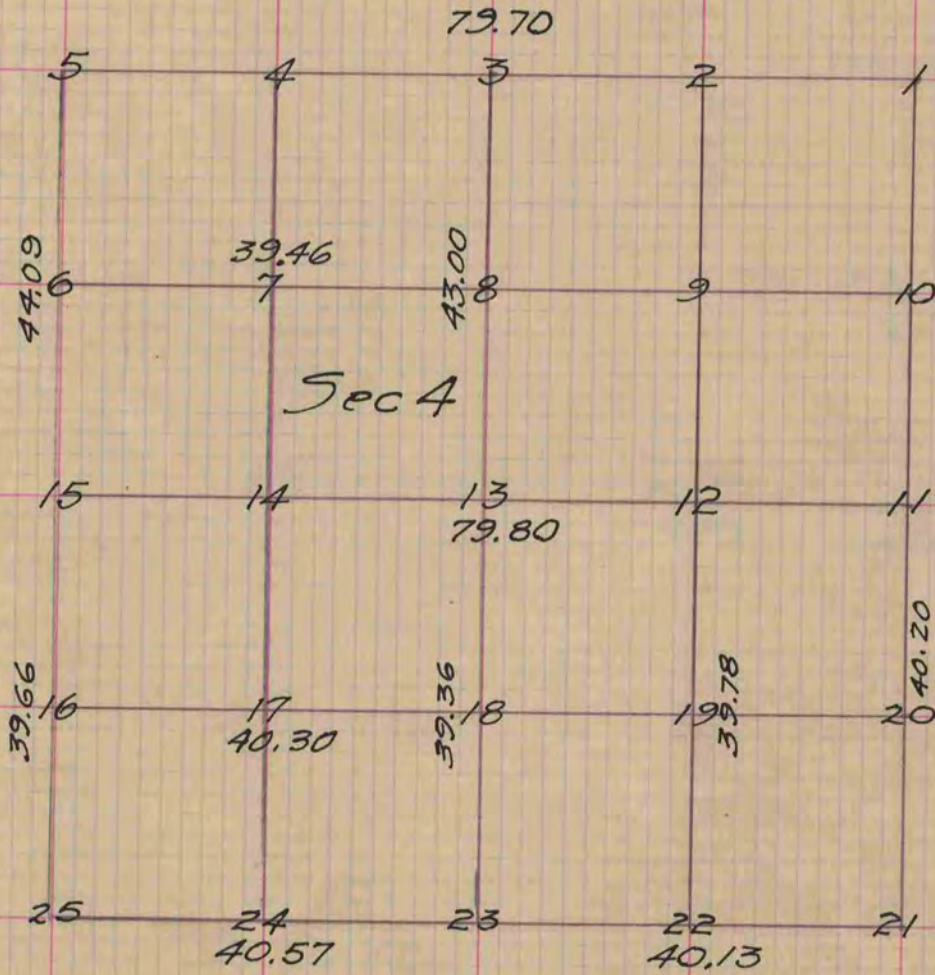
I hereby certify that the following is a correct record of said survey as made by me.

(Signed) Peter McVean
R. H. B.

County Surveyor.

Survey made for Isaac Mann and others

JANESVILLE SET [LOOSE-LEAF BOUND]



Buried a stone 18 inches long 4 inches square at figure 13 in the center of the highway below the surface of the ground
Also buried a stone at fig. 14 fifteen inches long eight inches thick and 8 wide. Even with the surface of the ground.
The above described survey was made in the month of March 1851 and in accordance with the statutes as therein provided.

(Signed) Peter McVean County Surveyor
R. H. B.

Copied from Page 2 Vol. 1. Original County Surveyors Record.