

PLAT AND RECORD

COUNTY BUILDING
CITY OF JANESVILLE

495
VOL. 5

Of a Survey on Section 17 T 4 R 11 E. of the 4 P. M. in PORTER Township
Rock County, Wisconsin, made OCT 30 1978

COL JING
CITY OF JANESVILLE

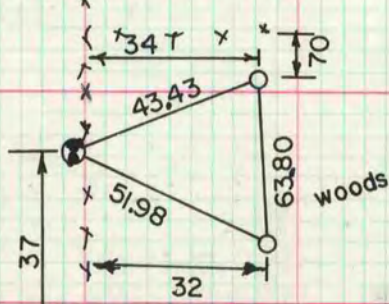
I hereby certify that the following is a correct record of said survey as made by me.

Donald Barnes



County Surveyor.

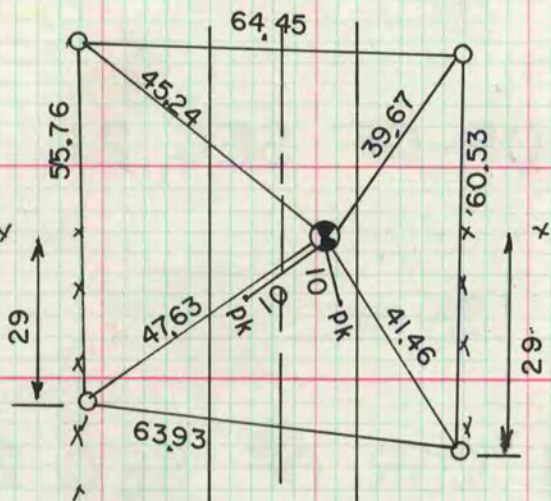
W 1/4 COR



FD POINTED I.I.H. 9"X10"X26" @ 4 HH
REPLACED WITH ALUM MON

O GI MON

N 1/4 COR



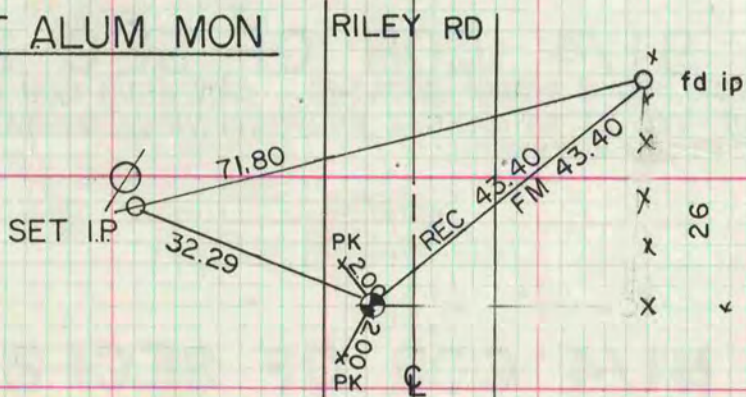
FD LIMESTONE 4X7X17 @ HH
THE TELEPHONE CABLE IS DIRECTLY UNDER THE
CORNER. REPLACED THE LIMESTONE WITH AN
ALUM MON

O 1"X24"IP

E 1/4 COR

FD PK NAIL SET BY N. TRUE (WPL). HE SET IT FROM
THE NW & NE REFERENCE PIPES

SET ALUM MON



MICROFILMED