

VOL. 5 PLAT AND RECORD

COUNTY BUILDING
CITY OF JANESVILLE

Of a Survey on Section 21 T 4N R 12 E. of the 4 P. M. in FULTON Township

Rock County, Wisconsin, made NOVEMBER the 6 1975

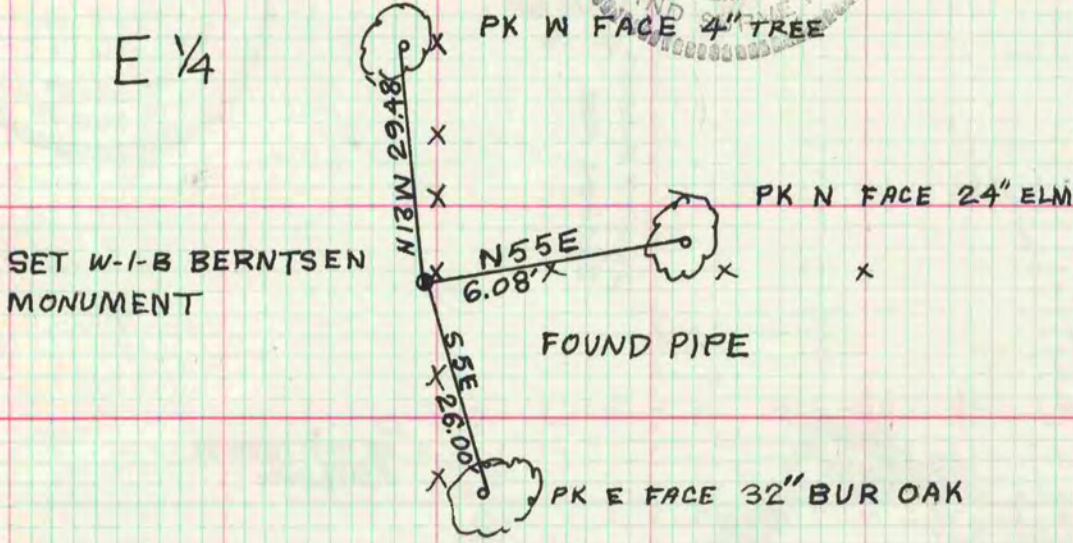
I hereby certify that the following is a correct record of said survey as made by me.

MICROFILMED



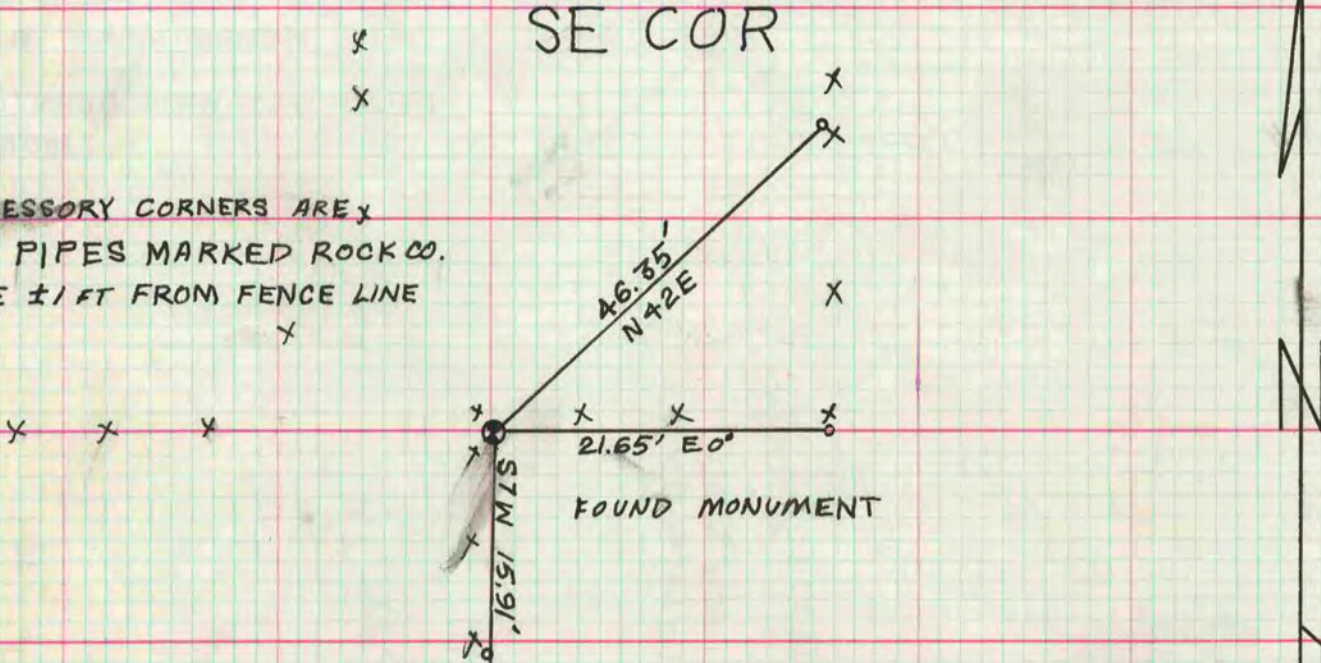
County Surveyor.

E 1/4



SE COR

ALL ACCESSORY CORNERS ARE
CAPPED PIPES MARKED ROCK CO.
AND ARE ±1 FT FROM FENCE LINE



W 1/4 COR

SET W-1-B
BERNTSEN
1 1/2' DEEP

