

PLAT AND RECORD

COUNTY BUILDING
CITY OF JANESVILLE

Of a Survey on Section 4 T 3 N R 12 E. of the 4 P. M. in JANESVILLE Township

Rock County, Wisconsin, made MAY 27, 28

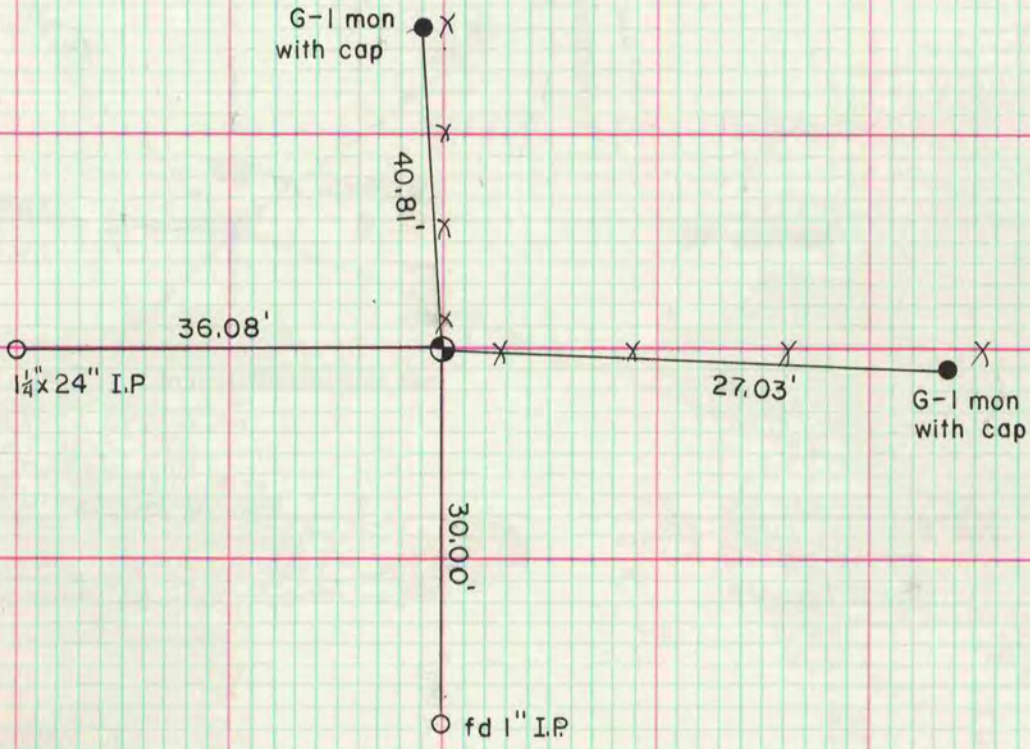
I hereby certify that the following is a correct record of said survey as made by me.

Donald A. Baines
County Surveyor.

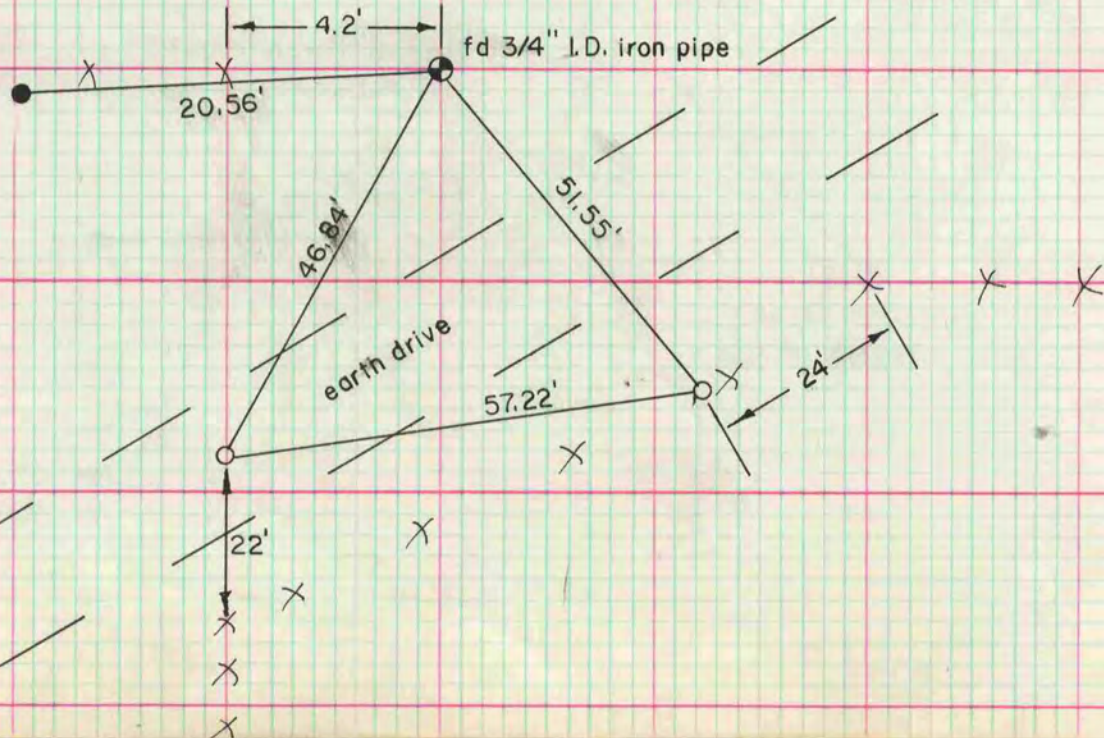


MICROFILMED

NE cor Sec 4
found stone (14" x 1 1/2") standing on end (with part
of same broken off) with a stone on the NE & SW
side. agrees with record—Ruger pg. 20 and
pg 161 original records. VOL 2



W 1/4 cor Sec 4
found 3/4" I.D. iron pipe
as described by Glen Northrop



O = 1 1/4" x 24" I.P.
● = G-1 mon with cap